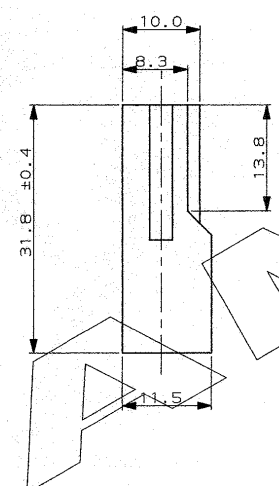
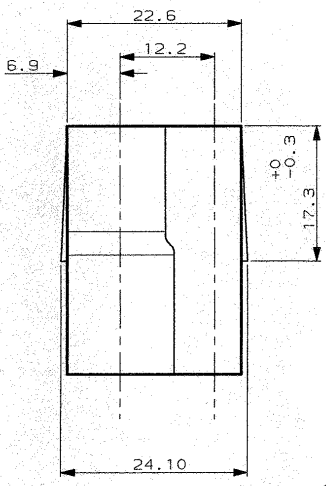


SCALA NON IMPEGNATIVA
(DO NOT SCALE)
DIMENSIONI IN
DIMENSIONS IN

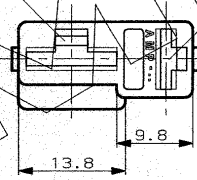
METRIC

PROIEZIONE EUROPEA
(EUROPEAN PROJECTION)



CAVITA' ADATTA PER TERMINALE FEMMINA FASTIN-ON SERIE .375"

CAVITA' ADATTA PER TERMINALE FEMMINA FASTIN-ON SERIE .250"



1 OBSOLETE PARTS: OBSOLETE CIS STREAMLINING PER D.RENAUD/D.SINISI

1 OBSOLETE
OBSOLETE

NERO	POLIAMMIDE 6-6	280771-5
ROSSO		280771-1
NATURALE		280771-0
FINITURA / COLORE (FINISH / COLOUR)	MATERIALE (MATERIAL)	NUMERO (PART NUMBER)

CUSTOMER DWG. FOR REFERENCE ONLY DISEGNO PER CLIENTE SOLO PER RIFERIMENTO

THIS DRAWING IS UNPUBLISHED RELEASE FOR PUBLICATION 19
 © COPYRIGHT 1989 BY AMP INCORPORATED, HARRISBURG, PA. ALL INTERNATIONAL RIGHT RESERVED. AMP PRODUCTS MAY BE COVERED BY U.S. AND FOREIGN PATENT AND/OR PATENT PENDING.
 TOLLERANZE: SE NON DIVERSAMENTE SPECIFICATO DIM. ISOLANTE (INS. DIA. RANGE) RANGO FILO (WIRE RANGE) SCALA (SCALE)
 (TOLERANCES, UNLESS OTHERWISE SPECIFIED) - - 2:1

ANGOLI (ANGLES) ± 0.3
 ± 2°

DIS. 15 JUNE 89
 (DR.) VERGANO P.

AMP AMP ITALIA S.p.A.
 Centro P. L.L. Corp., 15 COLLEGGIO (TORINO)

H1	REVISED PER ECO-09-022178	KK	25-9	CONT. -
H	REVISED FOR ET00-0319-97	A.F.	97	ECHO -
#	RIDISEGNATO SENZA CAMBIAMENTI	24-7	88	APP. -
REV.	REVISION RECORD	DIS. DATA (DR) DATE	APP. (APP.)	

DESCRIZIONE (DESCRIPTION) BLOCCHETTO 2 VIE A "I" FASTIN-ON PER TERMINALE FEMMINA SERIE .250 & .375
 LOC. SIZE NUMERO (DWG NO) I A3
 REV. FOGLIO (SHEET) H1 1 DI 1

DISTRIBUZIONE SPAIN (SIST)