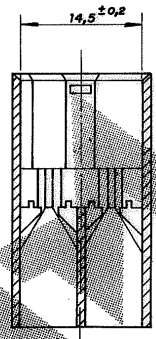
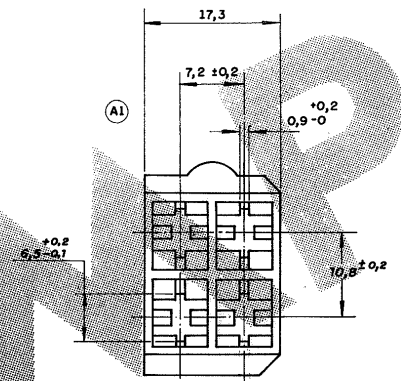
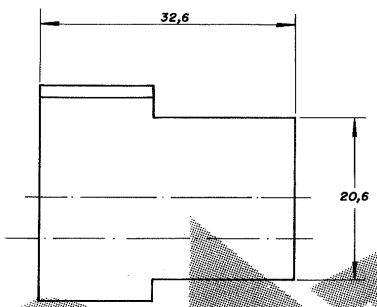
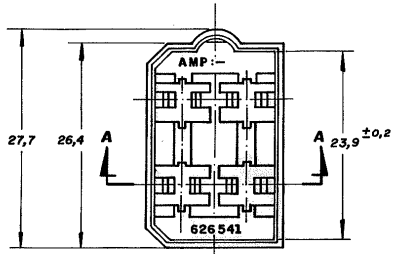


C 626 541

1 of 1

DO NOT SCALE
DIMENSIONS IN METRIC
3rd ANGLE PROJECTION



SEÇÃO A:A

△ - MATÉRIA PRIMA CONFORME ESPECIFICAÇÃO IEC 60335
GWT 750°C SEM CHAMA
RAW MATERIAL ACC. TO SPEC. IEC 60335
GWT 750°C WITHOUT FLAME.
2 OBSOLETE PARTS; OBSOLETE
CIS STREAMLINING PER D.RENAUD/D.SINISI

OBSOLETE

NATURAL	PA 6.6 V-0	2	-0
LARANJA		2	-7
MARROM		2	-6
CINZA		2	-5
PRETO		2	-4
AMARELO		2	-3
AZUL		2	-2
VERDE		2	-1
VERMELHO	PA 6.6	2	-0
LARANJA		2	-9
MARROM		2	-8
CINZA		2	-7
PRETO		2	-6
AMARELO		2	-5
AZUL		2	-4
VERDE		2	-3
VERMELHO TINGIDO		2	-2
NATURAL	POLIAMIDA 6.6	2	-1

OTHER TREATMENT	FINISH	MATERIAL	PART NUMBER
		POLIAMIDA 6.6	626 541 - I
CUSTOMER DWG for REFERENCE ONLY		THIS DRAWING IS UNPUBLISHED RELEASED FOR PUBLICATION	
		COPYRIGHT IS BY AMP DO BRASIL LTDA S.P. ALL INTERNATIONAL RIGHTS RESERVED AMP PRODUCTS MAY BE COVERED BY U.S. AND FOREIGN PATENTS AND/OR PATENTS PENDING.	
		TOLERANCES UNLESS OTHERWISE STATED	INS. DIA. RANGE WIRE RANGE SCALE
		DEC. ± 0,4	///
		ANGLES ± 1°	
		DR. Paulo S.B. Agosto	18-88
B1	ECO-09-026444	KK	AEG NOV09
B	REVISÃO LE 10.0051/05	H.C.	H.C. 05 Apr 05
A1	REVISADO	Priz	6-2-98
A	REDESENHADO	P.S.B	Agosto 18-88
ISS	REVISION RECORD	DR	CHK DATE
		DR	CHK DATE
		APP.	
		DESCRIPTION 4 WAY FASTIN-ON TAB HOUSING	
		AMP do BRASIL LTDA. São Paulo, Brasil	
		DWG NO	SHEET
		A3	1 of 1
		C 626 541	