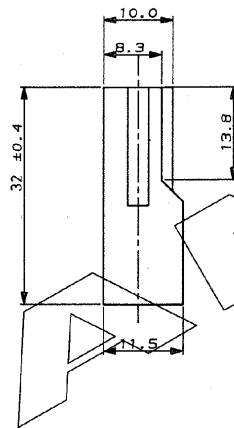
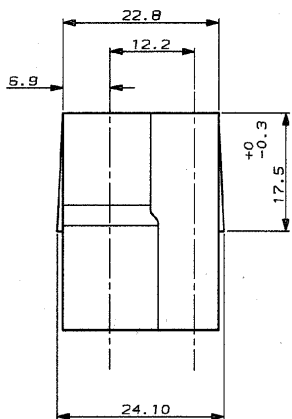


SCALA NON IMPERATIVA  
(DO NOT SCALE)  
DIMENSIONI IN  
MILLIMETRI

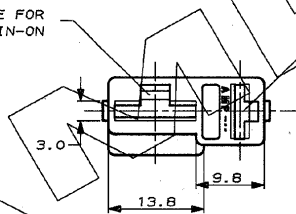
**METRIC**

PROIEZIONE EUROPEA  
EUROPEAN PROJECTION



CAVITY SUITABLE FOR  
.375 SRS.FASTIN-ON

CAVITY SUITABLE FOR  
.250 SRS.FASTIN-ON



1 OBSOLETE PARTS: OBSOLETE CIS STREAMLINING PER D.RENAUD/D.SINISI

△ OBSOLETE

BLACK	PA 6-6	281993-3
RED	G. F.	281993-2
CLEAR		281993-1
FINITURA / COLORE (FINISH / COLOUR)	MATERIALE (MATERIAL)	NUMERO (PART NUMBER)

CUSTOMER DWG. FOR REFERENCE ONLY      DISEGNO PER CLIENTE SOLO PER RIFERIMENTO

THIS DRAWING IS UNPUBLISHED | RELEASE FOR PUBLICATION 19

© 1989 AMP CORP. ALL RIGHTS RESERVED. AMP PRODUCTS MAY BE COVERED BY U.S. AND FOREIGN PATENT AND/OR PATENT PENDING.

TOLLERANZE, SE NON  
DIVERSAMENTE SPECIFICATE

± 0.3

± 2°

ANGOLI  
RANDELLI ± 2°

DIS. 15 JUNE 89

CON. -

IN PRODUCTION

REV. 1

APP. CAP. 5

**AMP** AMP ITALIA S.p.A.  
CORP. P.O. BOX 113  
COLLENO (TORINO)

DESCRIZIONE  
DESCRIPCIÓN 2 WAY FASTIN-ON REC. HOUSING  
(C.250-.375 SRS.)

LOC. SIZE NUMBER  
COMB. NO. C-281993

REV. 1

FOLIO 1 DI 1

DISEGNO PER CLIENTE