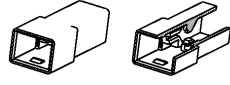
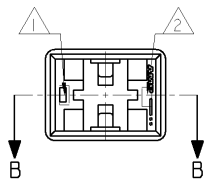


THIS DRAWING IS UNPUBLISHED. RELEASED FOR PUBLICATION.
 QUESTO DISEGNO NON DEVE ESSERE DIVULGATO O RIPRODOTTO. E' CONSENTITA LA DIVULGAZIONE.
 COPYRIGHT 19 BY AMP INCORPORATED. ALL RIGHTS RESERVED. TUTTI I DIRITTI SONO RISERVATI.

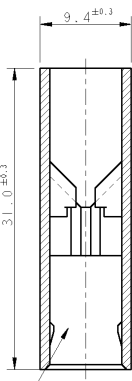
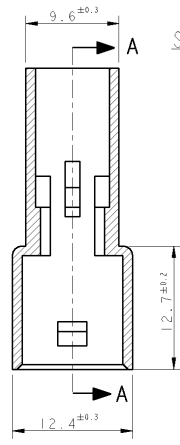
LOC	DIST	REVISIONS			
F	LTR	DESCRIPTION	DATE	OWN	APP
		AB REVISED PER ET00-0282-97	07/06/97	A.B.	C.T.
		AC REVISED PER ET00-0319-97	05/09/97	A.F.	C.T.
		AC1 REDRAWN BY CAD PER ET00-0195-98	20/07/98	F.B.	C.T.
		AD OBS. DASH 1--0, ET00-0065-04	24/03/04	H.Y.	C.T.
		AD1 ADDED P/N, ET00-0220-04	05/11/04	H.Y.	G.T.
		AD2 RELEASED 3--0, ET00-0045-05	23/02/05	H.Y.	G.T.



SCALE 1:1

SEZIONE A-A
SECTION A-A

SEZIONE B-B
SECTION B-B



TIPICA CAVITA' PER TERMINALE AMP
 FASTIN-FASTON SR.6.35mm.
 (TYPICAL CAVITY FOR AMP
 FASTIN-FASTON .250 SR.)

- 1 NUMERO DI IMPRONTA STAMPO (MOULD CAVITY IDENTIFICATION NO.)
- 2 MARCHIO DI FABBRICA AMP (AMP TRADE MARK)
- 4 AIR TIGHT PACKAGED NON PRODOTTO DA AMP ITALIA (NOT PRODUCED BY AMP ITALY)
- 5 NON DISPONIBILE DA AMP ITALIA (NO MORE AVAILABLE FROM AMP ITALY)
- 6 PRODUCT IN ACCORDANCE TO IEC 60335-1 NORM.

5, 6	NATURALE (NATURAL)	PA 6 UNFILLED	3-180916-0	AD
4, 5	ARANCIO (ORANGE)	PA 6.6 (PA 6.6 UNFILLED)	2-180916-9	AC
	VIOLETTO (VIOLET)		2-180916-8	AC
	GRIGIO (GRAY)		2-180916-7	AC
	MARRONE (BROWN)		2-180916-6	AC
	NERO (BLACK)		2-180916-5	AC
	GIALLO (YELLOW)		2-180916-4	AC
	BLU (BLUE)		2-180916-3	AC
	VERDE (GREEN)		2-180916-2	AC
	ROSSO (RED)		2-180916-1	AC
	NATURALE (NATURAL)		2-180916-0	AC
5	ARANCIO (ORANGE)	PA 6.6 (PA 6.6 UNFILLED)	180916-9	AC
5	VIOLETTO (VIOLET)		180916-8	AC
5	GRIGIO (GRAY)		180916-7	AC
5	NERO (BLACK)		180916-5	AC
5	ROSSO (RED)		180916-1	AC
5	NATURALE (NATURAL)		180916-0	AC

NOTE	COLORE (COLOUR)	MATERIALE (MATERIAL)	NUMERO (PART NUMBER)	REV

THIS DRAWING IS A CONTROLLED DOCUMENT FOR AMP INCORPORATED. IT IS SUBJECT TO CHANGE AND THE ORIGINAL DRAWING OR REVISIONS SHOULD BE CONTACTED FOR THE LATEST REVISION. QUESTO DISEGNO E' UN DOCUMENTO DI PROPRIETA' E' DISCIPLINATO PER BENE. AMP INCORPORATED TORRETO A VARIAZIONI. PER OTTENERE L'ULTIMA VERSIONE DEL DISEGNO CONTATTARE IL SERVIZIO TECNICO RESPONSABILE.		DOWN /DIS. 22 JUN 98 F. BORIN CHK /CONT. 22 JUN 98 C. TARTARI	AMP Italia S.p.A. Collegno, C.so F.lli Cervi 15
DIMENSIONS: DIMENSIONI: (mm) 	TOLERANCES UNLESS OTHERWISE SPECIFIED: TOLLERANZE: SE NON DIVERSAMENTE SPECIFICATO 0 PLC /DEC ± 1 PLC /DEC ± 2 PLC /DEC ± 3 PLC /DEC ± 4 PLC /DEC ± ANGLES /ANGOLI ± 2° FINITURA	NAME: F. BORIN NAME: C. TARTARI PRODUCT SPEC: SPEC DI PRODOTTO: 108-20020 APPLICATION SPEC: SPEC DI APPLICAZIONE: - WEIGHT: PESO: - FINITURA: -	SIZE: A3 CAGE CODE: 00779 DRAWING NO: 180916 RESTRICTED TO: -
MATERIAL: MATERIALE: SEE TABLE		CUSTOMER DRAWING: DISEGNO PER CLIENTE SOLO PER RIFERIMENTO	

AMP 1470-19 REV 27JUN96

Proj/ENGINEER DRAWING