

4

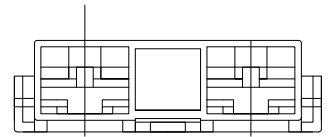
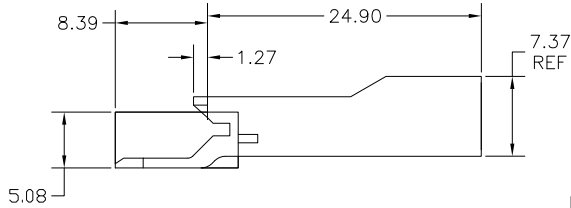
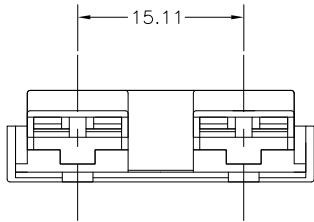
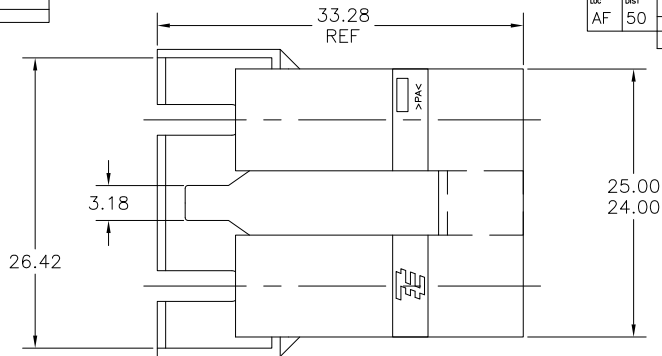
3

2

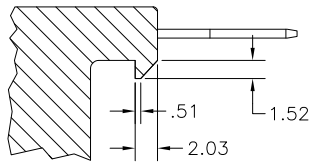
1

THIS DRAWING IS UNPUBLISHED. RELEASED FOR PUBLICATION. BY TYCO ELECTRONICS CORPORATION. ALL RIGHTS RESERVED.

LOC	DIST	REVISIONS			
AF	50	F	LR	DATE	BY
		T3		REVISED PER ECR-10-020821	JR RL



- 1 THIS HOUSING ACCEPTS LOW-INSERTION, PREMIER RECEPTACLE 63306, OR POSITIVE-LOCK MKIII RECEPTACLE 63854-1.
  - 2 TO MAINTAIN PROPER TERMINAL INSERTION FORCE INTO HOUSING, HOUSINGS MUST BE KEPT IN THEIR MOISTURIZED CONDITION (AS RECEIVED) PRIOR TO ASSEMBLY.
- 3 MOLDED WITH GLOW-WIRE APPROVED MATERIAL
  - 4 PRELIMINARY - NOT FOR PRODUCTION
  - 5 OFFERED FOR CONSIDERATION IN APPLICATIONS REQUIRING 'NON-DRIP' HOUSING MATERIAL.



PROPOSED MATING LOCKING DESIGN

6/6 NYLON, V0	PURPLE	4	3-521253-6	5
6 NYLON, V2	NATURAL	3	2-521253-1	
66/6 NYLON V0	BLUE		1-521253-7	
	PURPLE		1-521253-6	
	YELLOW		1-521253-4	
	GREEN		1-521253-3	
	RED		1-521253-2	
6/6 NYLON V2	NATURAL		1-521253-1	
	BLUE	4	521253-7	
	PURPLE	4	521253-6	
	BROWN	4	521253-5	
	YELLOW	4	521253-4	
	GREEN	4	521253-3	
	RED		521253-2	
	NATURAL		521253-1	
MATERIAL	FINISH/COLOR		PART NO	

THIS DRAWING IS A CONTROLLED DOCUMENT.		DRN	JR_RUTH	05JAN00	Tyco Electronics Corporation Harrisburg, PA 17105-3608
		CHK	JR_FELNER	05JAN00	
DIMENSIONS: mm		APPC	D. BRATINA	05JAN00	HOUSING, RECEPTACLE, FASTON OR POSITIVE-LOCK, 6.35 [ .250 ] SERIES
TOLERANCES UNLESS OTHERWISE SPECIFIED:		NAME			
0 PLG	± .005	APPLICATION SPEC			RESTRICTED TO
1 PLG	± .005	WEIGHT			
2 PLG	± .005				
3 PLG	± .005				
4 PLG	± .005				
ANGLES	± .005				
MATERIAL	SEE TABLE	FINISH			
		SIZE	A2	00779	C=521253
		CUSTOMER DRAWING	SCALE	4:1	SHEET 1 of 1
					REV T3