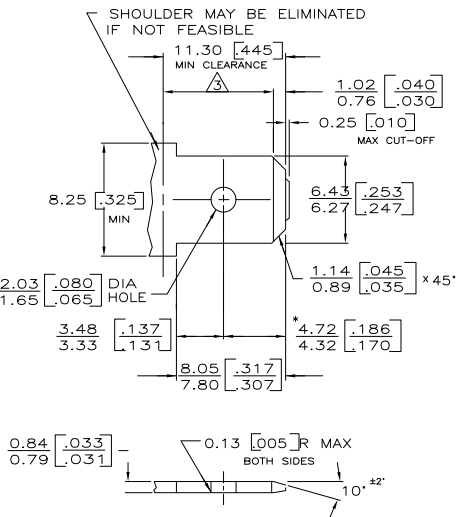
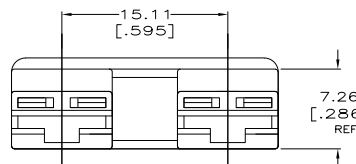
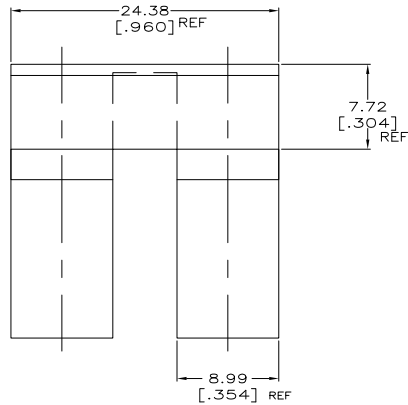
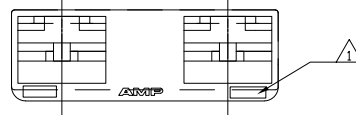


THIS DRAWING IS UNPUBLISHED. RELEASED FOR PUBLICATION  
 BY TYCO ELECTRONICS CORPORATION. ALL RIGHTS RESERVED.

### SUGGESTED MATING TAB

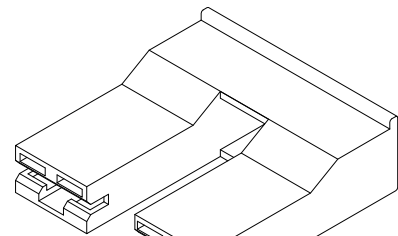


- 1 - MATL: 1/2H BRASS OR NICKEL PL STEEL.
- 2 - NO BURRS PERMISSIBLE AT HOLE.
- 3 - MUST BE FLAT WITHIN 0.076 [003] OVER THIS LENGTH.
- 4 - TIN PLATING IS REQUIRED ON BRASS WHEN TERMINAL TEMP. IS OVER 225°F.
- 5 - HOLE MUST BE SYMMETRICAL ABOUT TAB  $\phi$  WITHIN 0.076 [003]
- \* TO BE USED ONLY WHEN SHOULDER IS ELIMINATED.

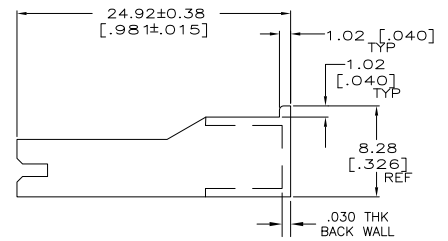


LOC	DIST	REVISIONS			
P	LTR	DESCRIPTION	DATE	BY	APPD
AF	50	E1	REV PER EDR 07-023243	09OCT07	JR EH
		E2	REVISED PER ECO-10-000443	13JAN10	KK AEG

- △ DFE SYMBOL PER TABLE
- △ PRELIMINARY - NOT FOR PRODUCTION
- △ OBSOLETE PARTS: OBSOLETE CIS STREAMLINING PER D.RENAUD/D.SINISI



3D VIEW



>PA6<	NATURAL	NYLON 6	△ 521119-5
>PA66<	BLUE	6/6 NYLON	521119-4
>PA66<	PUTTY		△ 521119-2
>PA66<	NATURAL		521119-1
DFE SYMBOL	COLOR	MATERIAL	PART NO

THIS DRAWING IS A CONTROLLED DOCUMENT.		DRN: J.R. RUTH 7/3/96	Tyco Electronics Corporation Harrisburg, PA 17105-3608	
DIMENSIONS: MM INCHES		CHK: M. FEHRER 7/3/96	APPC: J. GILLESPIE	
MATERIAL: SEE TABLE		FINISH: SEE TABLE	APPLICATION SPEC: -	RESTRICTED TO: -
SIZE: A2		CAGE CODE: 00779	DRAWING NO: C-521119	SCALE: 4:1
CUSTOMER DRAWING		SHEET 1 of 1		REV E2