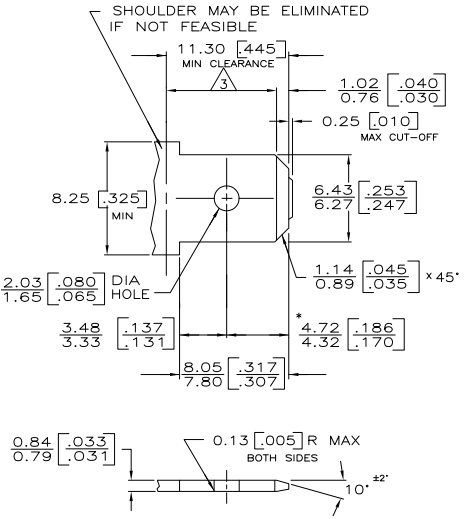
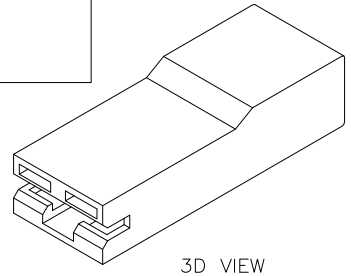


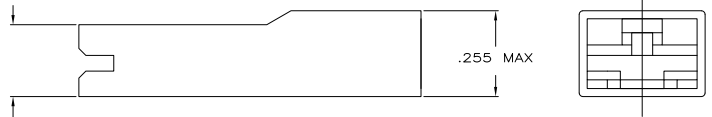
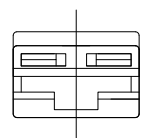
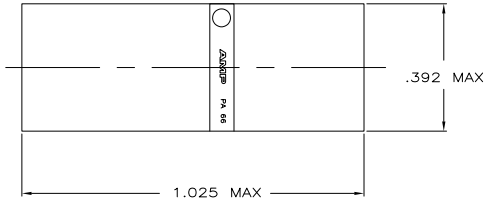
SUGGESTED MATING TAB



- 1 - MATL: 1/2H BRASS OR NICKEL PL STEEL.
- 2 - NO BURRS PERMISSIBLE AT HOLE.
- 3 - MUST BE FLAT WITHIN 0.076 [.003] OVER THIS LENGTH.
- 4 - TIN PLATING IS REQUIRED ON BRASS WHEN TERMINAL TEMP. IS OVER 225° F
- 5 - HOLE MUST BE SYMMETRICAL ABOUT TAB C_L WITHIN 0.076 [.003]
- * TO BE USED ONLY WHEN SHOULDER IS ELIMINATED.



- 3 PRELIMINARY - NOT FOR PRODUCTION
- 4 OFFERED FOR CONSIDERATION IN "NON-DRIP" HOUSING MATERIAL APPLICATIONS.
- 5 OBSOLETE PARTS: OBSOLETE CIS STREAMLINING I PER D.RENAUD/D.SINIS



LOC	DIST	REVISIONS			
P	LTR	DESCRIPTION	DATE	MIN	APPD
AF	50	M4	REVISED PER ECR-11-006216	12APR11	HMR KR

1 ALL DIMENSIONS APPLY TO A MOISTURIZED HOUSING.

COLOR	MATERIAL	PART NO
BLACK	66/6 OR 66 NYLON, VO	1-521120-6
NATURAL	66/6 OR 66 NYLON, VO	1-521120-5
NATURAL	6/6 NYLON, VO	1-521120-4
NATURAL	66/6 OR 66 NYLON, VO	1-521120-3
YELLOW	6/6 NYLON	1-521120-2
BLUE	6/6 NYLON	1-521120-1
GREEN	6/6 NYLON	1-521120-0
RED	6/6 NYLON	521120-9
BLACK	6/6 NYLON	521120-8
NATURAL	6/6 NYLON	521120-7
BLACK	4/6 NYLON	521120-6
RED	6/6 NYLON	521120-5
BLUE	6/6 NYLON	521120-4
PUTTY	6/6 NYLON	521120-2
NATURAL	6/6 NYLON	521120-1

THIS DRAWING IS A CONTROLLED DOCUMENT.

DESIGNED BY: J.R. RUTH 7/3/96	APPROVED BY: M.S. FEHER 7/3/96
DRAWN BY: J. GILLISPIE 7/3/96	NAME: J. GILLISPIE
DATE: 7/3/96	PRODUCT SPEC: --
APPLICATION SPEC: --	SIZE: A2
WEIGHT: --	CAGE CODE: 00779
FINISH: --	DRAWING NO: C-521120

MATERIAL: SEE TABLE FINISH: SEE TABLE

CUSTOMER DRAWING SCALE: 5:1 SHEET: 1 of 1 REV: M4

TE Connectivity HOUSING, RECEPTACLE, POSITIVE-LOCK, MKIII, 6.35 [.250] SERIES