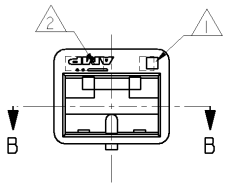
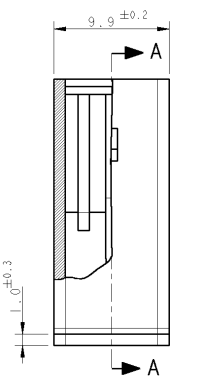


THIS DRAWING IS UNPUBLISHED. RELEASED FOR PUBLICATION.
 QUESTO DISEGNO NON DEVE ESSERE DIVULGATO O RIPRODOTTO. E' CONSENTITA LA DIVULGAZIONE.
 COPYRIGHT 19 BY AMP INCORPORATED. ALL RIGHTS RESERVED. TUTTI I DIRITTI SONO RISERVATI.

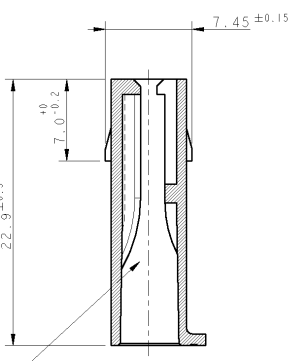
LOC	DIST	REVISIONS (REVISIONI)			
F	LTR	DESCRIPTION (DESCRIZIONE)	DATE (DATA)	OWN (DISEG)	APPD (APP)
P		REDRAWN BY CAD PER ET00-0183-95	11/07/95	A.B.	C.T.
AB		REVISED PER ET00-0319-97	05/09/97	A.F.	C.T.
AB1		REDRAWN BY CAD PER ET00-0195-98	20/07/98	F.B.	C.T.
AB2		ADDED P/N, ET00-0211-04	19/10/04	H.Y.	G.T.
AB3		REVISED PER ECO-09-026346	26NOV09	KK	AEG



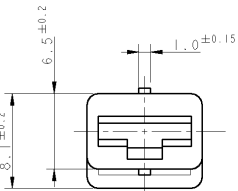
SEZ. PARZIALE B-B
PARTIAL SECT. B-B



SEZ. A-A
SECT. A-A



TIPICA CAVITA' PER TERMINALE AMP FASTIN-FASTON SR. 6.35mm. (TYPICAL CAVITY FOR AMP FASTIN-FASTON .250 SR.)



- 1 NUMERO DI IMPRONTA STAMPO (MOULD CAVITY IDENTIFICATION NO.)
- 2 MARCHIO DI FABBRICA AMP (AMP TRADE MARK)
- 3 VERSIONE IN ACCORDO ALLA IEC 60695-2-11, IEC 60335-1 (GLOW WIRE) (VERSION ACCORDING TO IEC 60695-2-11, IEC 60335-1, GLOW WIRE)
- 4 OBSOLETE PARTS: OBSOLETE CIS STREAMLINING PER D.RENAUD/D.SINISI

NOTE	COLORE (COLOUR)	MATERIALE (MATERIAL)	NUMERO (PART NUMBER)
OBSOLETE	3	NATURALE (NATURAL)	PA6 UNFILLED
		ARANCIO (ORANGE)	1-180905-0
		VIOLETTA (VIOLET)	180905-9
		GRIGIO (GRAY)	180905-8
		MARRONE (BROWN)	180905-7
		NERO (BLACK)	180905-6
		BLU (BLUE)	180905-5
		VERDE (GREEN)	180905-3
		ROSSO (RED)	180905-2
		NATURALE (NATURAL)	180905-1
		PA 6.6 (PA 6.6 UNFILLED)	180905-0

THIS DRAWING IS A CONTROLLED DOCUMENT FOR AMP INCORPORATED. IT IS SUBJECT TO CHANGE AND THE ORIGINAL DRAWING OR REVISION SHOULD BE CONTACTED FOR THE LATEST REVISION. QUESTO DISEGNO E' UN DOCUMENTO DI PROPRIETA' E' OBBLIGATORIO PER BELL AMP INCORPORATED TORRETO A VARIAZIONI. PER OTTENERE L'ULTIMA VERSIONE DEL DISEGNO CONTATTARE IL SPECIFIC TECNICO RESPONSABILE.		DOWN /DIS. 22JUN98 F. BORIN CHK /CONT. 22JUN98 C. TARTARI APVD /APP. - NAME - PRODUCT SPEC SPEC DI PRODOTTO 108-20020 APPLICATION SPEC SPEC DI APPLICAZIONE - WEIGHT PESO - CUSTOMER DRAWING DISEGNO PER CLIENTE SOLO PER RIFERIMENTO	AMP Italia S.p.A. Collegno, C.so F.lli Cervi 15 FASTIN-FASTON™ CONNECTOR .250 SRS. FEMALE HOUSING, 1 POS. SIZE A3 CAGE CODE 00779 DRAWING NO. C-180905 SCALE SCALA: 1 SHEET FOGLIO 1 OF DI 1 REV AB3
DIMENSIONS: DIMENSIONI: mm TOLERANCES UNLESS OTHERWISE SPECIFIED: TOLLERANZE: SE NON DIVERSAMENTE SPECIFICATO 0 PLC /DEC ± 1 PLC /DEC ± 2 PLC /DEC ± 3 PLC /DEC ± 4 PLC /DEC ± ANGLES /ANGOLI ± 2° MATERIAL MATERIALE SEE TABLE FINISH FINITURA -			