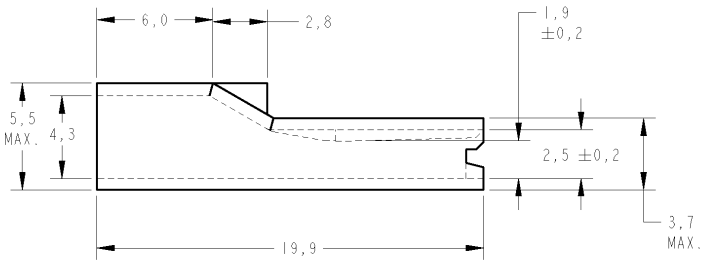
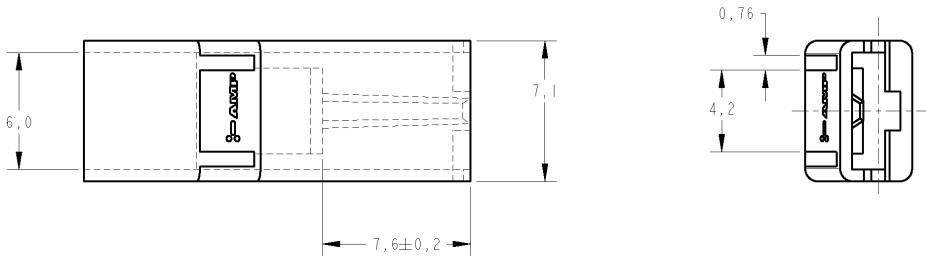


THIS DRAWING IS UNPUBLISHED. RELEASED FOR PUBLICATION 2003
 © COPYRIGHT 2003 BY TYCO ELECTRONICS CORPORATION. ALL RIGHTS RESERVED.

LOC	DIST	REVISIONS			
P	LTR	DESCRIPTION	DATE	DWN	APVD
AP	-				
P1		REV PER ECO-09-026444	27NOV09	KK	AEG
P2		REV. BY ECO-10-006997	09APR10	HC	WLS

CAD P2/3
 DO NOT REVISE EXCEPT BY CAD.



1 - MATÉRIA-PRIMA CONFORME ESPECIFICAÇÃO IEC 60335-1, GWT 750°C, SEM CHAMA.
 RAW MATERIAL ACC. TO SPEC. IEC 60335-1, GWT 750°C, WITHOUT FLAME.

2 - OBSOLETE PARTS: OBSOLETE CIS STREAMLINING PER D.RENAUD/D.SINISI

OBSOLETE
 2

NATURAL	△	2-880488-2
NATURAL	PA6.6VO OR PA6.6VO+PA6VO	2-880488-1
AMARELO/YELLOW	PA 6.6	1-880488-5
VERMELHO/RED	PA 6.6	1-880488-4
AZUL/BLUE	PA 6.6	1-880488-3
PRETO/BLACK	PA 6.6	1-880488-2
NATURAL/NATURAL	PA 6.6	1-880488-1
VERMELHO/RED	POLIPROPILENO/POLYPROPYLENE	880488-4
AZUL/BLUE	POLIPROPILENO/POLYPROPYLENE	880488-3
NATURAL/NATURAL	POLIPROPILENO/POLYPROPYLENE	880488-2
PRETO/BLACK	POLIPROPILENO/POLYPROPYLENE	880488-1

FINISH	MATERIAL	PART NUMBER

DWN: 05SEP2003
 M.R.BRIZ
 CHK: 05SEP2003
 P.L.FARIA
 APVD: 05SEP2003
 D.A.O.LIVEIRA
 NAME: .187 S. FASTON RECEPTACLE HOUSING
 PRODUCT SPEC: N/A
 APPLICATION SPEC: N/A
 WEIGHT: -
 SIZE: A3
 CAGE CODE: 00779
 DRAWING NO: C=880488
 RESTRICTED TO: -
 CUSTOMER DRAWING
 SCALE: 5:1
 SHEET: 1 of 1
 REV: P2

DIMENSIONS:	TOLERANCES UNLESS OTHERWISE SPECIFIED:
mm	0 PLC ±-
	1 PLC ±0.5
	2 PLC ±-
	3 PLC ±-
	4 PLC ±-
	ANGLES ±-
MATERIAL: SEE TABLE	FINISH: SEE TABLE