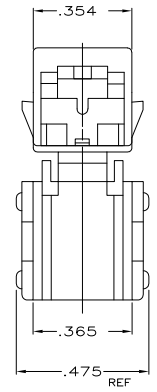
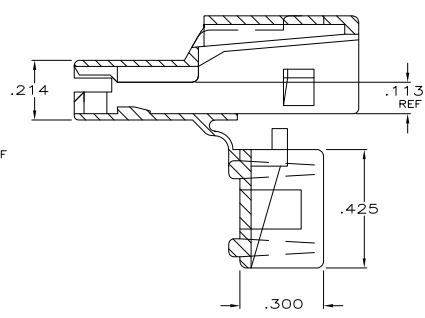
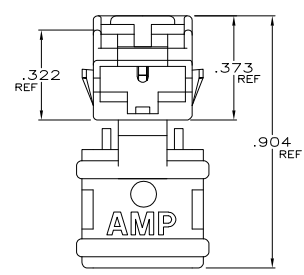
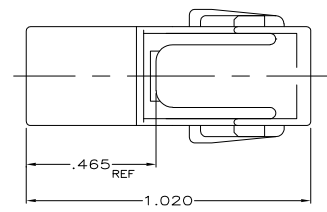
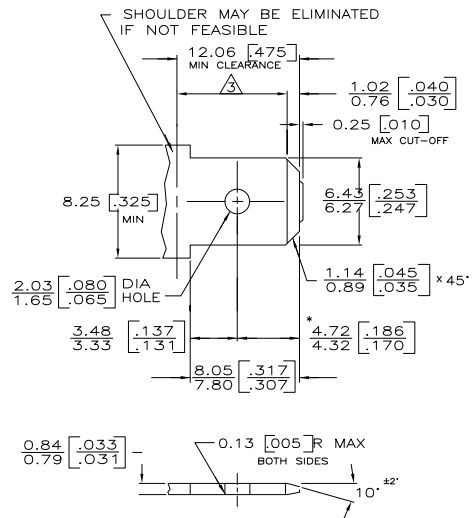


THIS DRAWING IS UNPUBLISHED. RELEASED FOR PUBLICATION  
 © COPYRIGHT BY TYCO ELECTRONICS CORPORATION. ALL RIGHTS RESERVED.

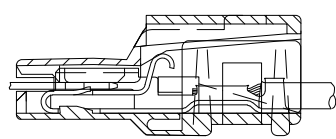
LOC	DIST	REVISIONS		DATE	MIN	APD
AF	50	F	LR			
		R1	REV PER ECR 06-000652	17JAN06	JR	ED

### SUGGESTED MATING TAB

PRELIMINARY - NOT FOR PRODUCTION



- 1 - MATL: 1/2 H BRASS OR NICKEL PL STEEL.
  - 2 - NO BURRS PERMISSIBLE AT HOLE.
  - 3 - MUST BE FLAT WITHIN 0.076 [.003] OVER THIS LENGTH.
  - 4 - TIN PLATING IS REQUIRED ON BRASS WHEN TERMINAL TEMP. IS OVER 225° F.
  - 5 - HOLE MUST BE SYMMETRICAL ABOUT TAB C Q WITHIN 0.076 [.003]
- \* TO BE USED ONLY WHEN SHOULDER IS ELIMINATED.



ASSEMBLY VIEW

BLACK	4/6 NYLON, V2	520961-4
NATURAL	6/6 NYLON, V2	520961-3
NATURAL	66/6 NYLON, V0	520961-2
BLACK	6/6 NYLON, V2	520961-1
FINISH - COLOR	MATERIAL	PART NO

THIS DRAWING IS A CONTROLLED DOCUMENT.		J.R. RUTH 1/5/99 G.R. 1/5/99 M.S. FEHER 3/7/99 J. GILLESPIE PRODUCT SPEC APPLICATION SPEC WEIGHT FINISH		Tyco Electronics Corporation Harrisburg, PA 17105-3608 HOUSING, POSITIVE-LOCK, .250 SERIES, MK I SIZE: CAGE CODE DRAWING NO: A200779 C-520961 RESTRICTED TO: CUSTOMER DRAWING	
DIMENSIONS: INCHES	TOLERANCES UNLESS OTHERWISE SPECIFIED	DATE	NAME	SCALE	SHEET
0 PLC ± .010	1 PLC ± .005			4:1	1 of 1
2 PLC ± .003	3 PLC ± .010				REV R1
4 PLC ± .005	5 PLC ± .005				