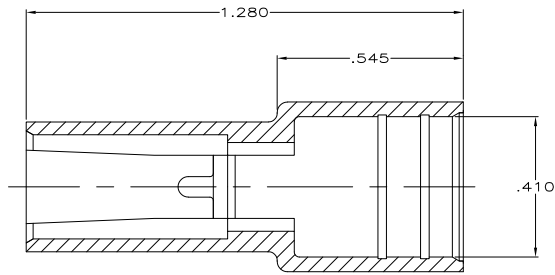
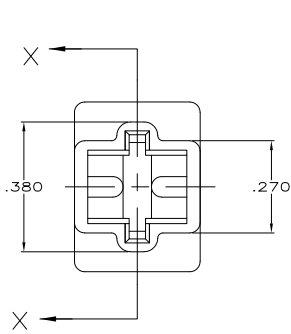
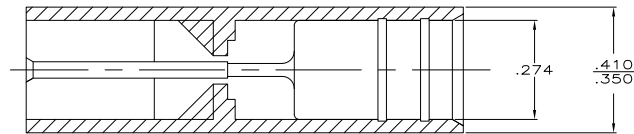
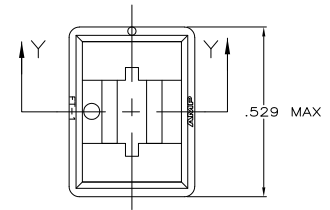


THE DRAWING IS UNPUBLISHED
 RELEASED FOR FABRICATION
 ALL RIGHTS RESERVED.

REV	DATE	DESCRIPTION	BY	APP'D
AF 50				
AE2	11MAR11	REVISED PER ECO-11-004917	RK	HMR



SECTION X-X



SECTION Y-Y
 ROTATED 90° CW

1 OBSOLETE PARTS: OBSOLETE CIS STREAMLINING PER
 D.RENAUD/D.SINISI

REVISION	COLOR	MATERIAL	PART NO
1	BLACK	4/6 NYLON UL 150° C	480053-0
	DYED GREY	6/6 NYLON	480053-9
	DYED PINK	6/6 NYLON	480053-8
	DYED BLUE	6/6 NYLON	480053-7
	DYED GREEN	6/6 NYLON	480053-6
	RED	6/6 NYLON	480053-5
	BLACK	6/6 NYLON	480053-4
	NATURAL	6/6 NYLON	480053-3
	BLACK	CYCOLAC	480053-2
	CLEAR	TENITE	480053-1
	COLOR	MATERIAL	PART NO

THIS DRAWING IS A CONTROLLED DOCUMENT FOR AMP INCORPORATED. IT IS SUBJECT TO CHANGE AND THE CONTROLLING ENGINEERING ORGANIZATION SHOULD BE CONTACTED FOR THE LATEST REVISION.

THIS DRAWING IS A CONTROLLED DOCUMENT.		DATE	3/10/04		TE Connectivity
DRAWN BY: R. BUTH		DATE	3/10/04		
CHECKED BY: MS. FEHER		DATE	3/10/04		
DESIGNED BY: R. BEAVER		DATE	3/10/04	HOUSING, TAB, FASTIN-FASTON, .250 SERIES	
DIMENSIONS: (MM/INCHES)		TOLERANCES UNLESS OTHERWISE SPECIFIED:		PRODUCT SPEC:	
0 P/C ± .015 1 P/C ± .015 2 P/C ± .015 3 P/C ± .015 4 P/C ± .015 ANGLES ± .015		APPLICATION SPEC:		WEIGHT:	
MATERIAL: SEE TABLE		FINISH: SEE TABLE		CUSTOMER DRAWING	
SCALE: 5:1		SHEET: 1 of 1		REV: AE2	