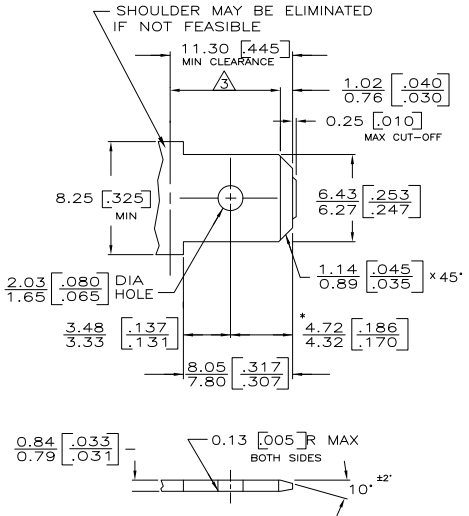


THIS DRAWING IS UNPUBLISHED. RELEASED FOR PUBLICATION. ALL RIGHTS RESERVED.

SUGGESTED MATING TAB



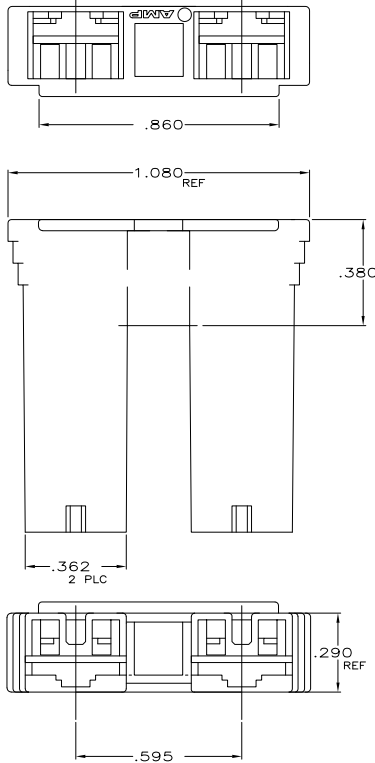
- 1 - MATL: 1/2H BRASS OR NICKEL PL STEEL.
- 2 - NO BURRS PERMISSIBLE AT HOLE.
- 3 - MUST BE FLAT WITHIN 0.076 [0.003] OVER THIS LENGTH.
- 4 - TIN PLATING IS REQUIRED ON BRASS WHEN TERMINAL TEMP. IS OVER 225° F.
- 5 - HOLE MUST BE SYMMETRICAL ABOUT TAB C Q WITHIN 0.076 [0.003]
- * TO BE USED ONLY WHEN SHOULDER IS ELIMINATED.

1 FOR USE WITH MKII POSITIVE LOCK, LOW INSERTION FORCE FASTON RECEPTACLES AND MOST BUDGET FASTON RECEPTACLES.

2 PRELIMINARY - NOT FOR PRODUCTION

3 PREPRODUCTION - FASR REQUIRED

4 OBSOLETE PARTS: OBSOLETE CIS STREAMLINING PER D.RENAUD/D.SINISI



LOC	DIST	REVISIONS			
P	LR	DESCRIPTION	DATE	BY	APPD
G	01				
	P4	REVISED PER ECO-11-004917	11MAR11	RK	HMR

4 OBSOLETE	VO GREEN	1-520935-9
	VO BLACK	1-520935-8
	VO BROWN	1-520935-7
4 OBSOLETE	VO YELLOW	1-520935-6
	VO BLUE	1-520935-5
	VO RED	1-520935-2
	VO NATURAL	1-520935-1
	BLACK	520935-8
	BROWN	520935-7
	YELLOW	520935-6
	BLUE	520935-5
	GREEN	520935-4
	WEATHER RESIST BLACK	520935-3
	RED	520935-2
	NATURAL	520935-1
	COLOR	PART NO

THIS DRAWING IS A CONTROLLED DOCUMENT.

DESIGNED BY: J.R. RUTH	DATE: 4/14/08
CHECKED BY: M. FEHER	DATE: 4/14/08
APPROVED BY: R. RUZO	DATE: 4/14/08
PRODUCT SPEC: -	APPLICATION SPEC: -
WEIGHT: -	SIZE: A2
MATERIAL: 6/6 NYLON	CAGE CODE: 00779
FINISH: SEE TABLE	DRAWING NO: 520935
	CUSTOMER DRAWING

TE Connectivity
HOUSING, RECPT, POSITIVE-LOCK & STANDARD FASTON, .250 SERIES, MKII

SCALE: 4:1 SHEET: 1 of 1 REV: P4