

4

3

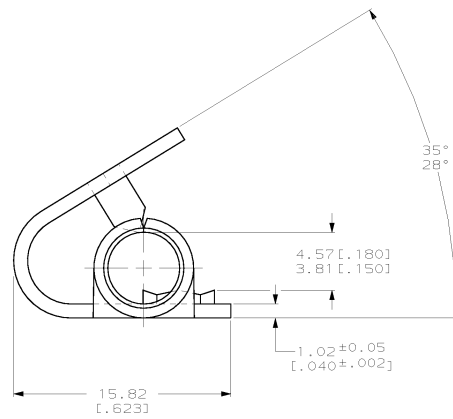
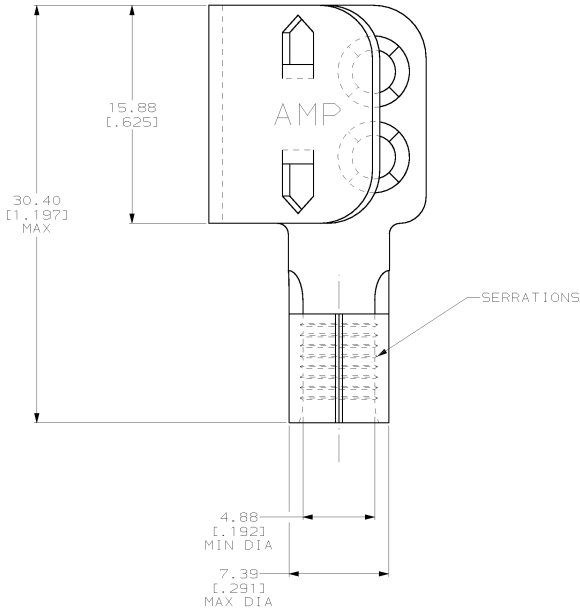
2

1

THIS DRAWING IS UNPUBLISHED. RELEASED FOR PUBLICATION. .19 .  
 © COPYRIGHT 19 BY AMP INCORPORATED. ALL RIGHTS RESERVED.

REV. NO.	DATE	DESCRIPTION	DATE	BY	APP'D
G	86				
F					
G		REVISED PER 0L20-0217-97	24NOV97	DKS	MJS

1 2.41 [.095] MAX ALUMINUM FOIL THK



BRASS PER 00-C-50	53660-4
STEEL PER 90-5-698	53660-2
MATERIAL	AMP PART NUMBER

### AMP INCORPORATED CUSTOMER SERVICE SYSTEMS

FOR ADDITIONAL PRODUCT INFORMATION OR COPIES OF DRAWINGS AND TECHNICAL DOCUMENTS	PRODUCT INFORMATION CENTER 1-800-522-6752	RECOMMENDED OPERATING TEMPERATURE: 150°C MAX
FOR APPLICATION TOOLING INFORMATION	TOOLING ASSISTANCE CENTER 1-800-722-1111	VOLTAGE RATING: NOT APPLICABLE
FOR ORDER ENTRY	1-800-526-5142	WIRE CROSS SECTIONAL AREA RANGE: 6.84-10.51mm² (13,100-20,800) CIR MILS SOLID OR STRANDED

THIS DRAWING IS A CONTROLLED DOCUMENT	
DIMENSIONS mm (INCHES)	TOLERANCES UNLESS OTHERWISE SPECIFIED
Ø	F PLG ±.01
	D PLG ±.01
	H PLG ±.01
	K PLG ±.01
	ANGLES ±.5°
MATERIAL	FINISH
SEE TABLE	TIN PLATE
	0.00254 [.00100] MIN THK PER ASTM B-545

DR. SCHEDULE	25NOV97	AMP Incorporated Harrisburg, PA 17105-3608
CHK	030697	
APP'D	030697	<b>AMP</b> W/ BARREL, TAP SPLICE, TERMINAL FOIL™, WIRE SIZE: 8 AWG
PRODUCT SPEC		
APPLICATION SPEC		SIZE CASE CODE (DRAWING NO) RESTRICTED TO A2 00779 C- 53660 -
REPRINT		SCALE 5:1 SHEET 1 OF 1 REV G
CUSTOMER DRAWING		

53660

B

A