

DRAWING MADE IN THIRD ANGLE PROJECTION

3

2

1

LOC R187 86

© COPYRIGHT 1961 BY AMP INCORPORATED, HARRISBURG, PA. ALL INTERNATIONAL RIGHTS RESERVED. AMP INCORPORATED PRODUCTS COVERED BY U. S. AND FOREIGN PATENTS AND/OR PATENTS PENDING.

REVISIONS						
P	F	ZONE	LTR	DESCRIPTION	DATE	APPROVED
✓	✓			F REDRAWN & ADDED 2-329254-4 PER NPS 68-0412	10-26-73	T. Rubin
				G REV. PER G-5771	2/92	BT.

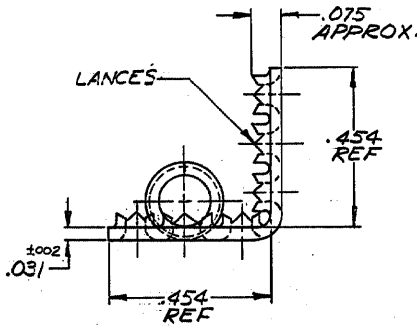
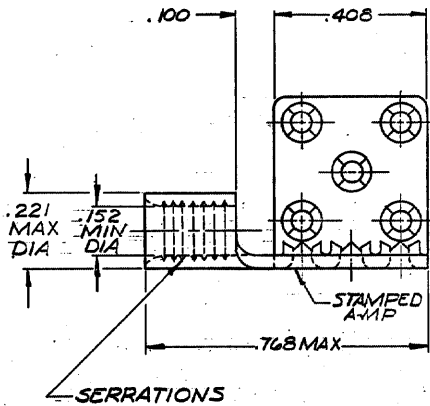


TABLE I

COPPER (QQ-C-576) ANNEALED FINISH: SEE TABLE II	2-329254-4 329254
MATERIAL & FINISH	PART NO

TABLE II

2-329254-4	TIN PL (MIL-T-10727)
329254	BRIGHT NICKEL PL (QQ-N-290).0002MIN EXT. THK
PART NO.	FINISH

UNLESS OTHERWISE SPECIFIED DIMENSIONS ARE IN INCHES. TOLERANCES ON: DECIMALS ± .008 ANGLES ± 5°	CONTRACT NO	AMP INCORPORATED Harrisburg, Pa.	
	DR <i>Dr. Cunningham</i> 10-26-73	NAME	WIRE TERMINAL
MATERIAL	CHK <i>Thomas Rubin</i> 10-29-73	TERMI-FOIL-SOLI STRAND-DOUBLE FACE	
SEE TABLE I	APPD <i>Ally</i> 10-29-73	SIZE	B
FINISH	APPD <i>Ally</i> 10-29-73	CODE IDENT NO	00779
SEE TABLE I	DSGN APPD	NUMBER	329254
	OTHER APPD	SCALE	4:1
		SHEET	1 OF 1

AMP 1470-15 (1-73)

CUSTOMER DRAWING