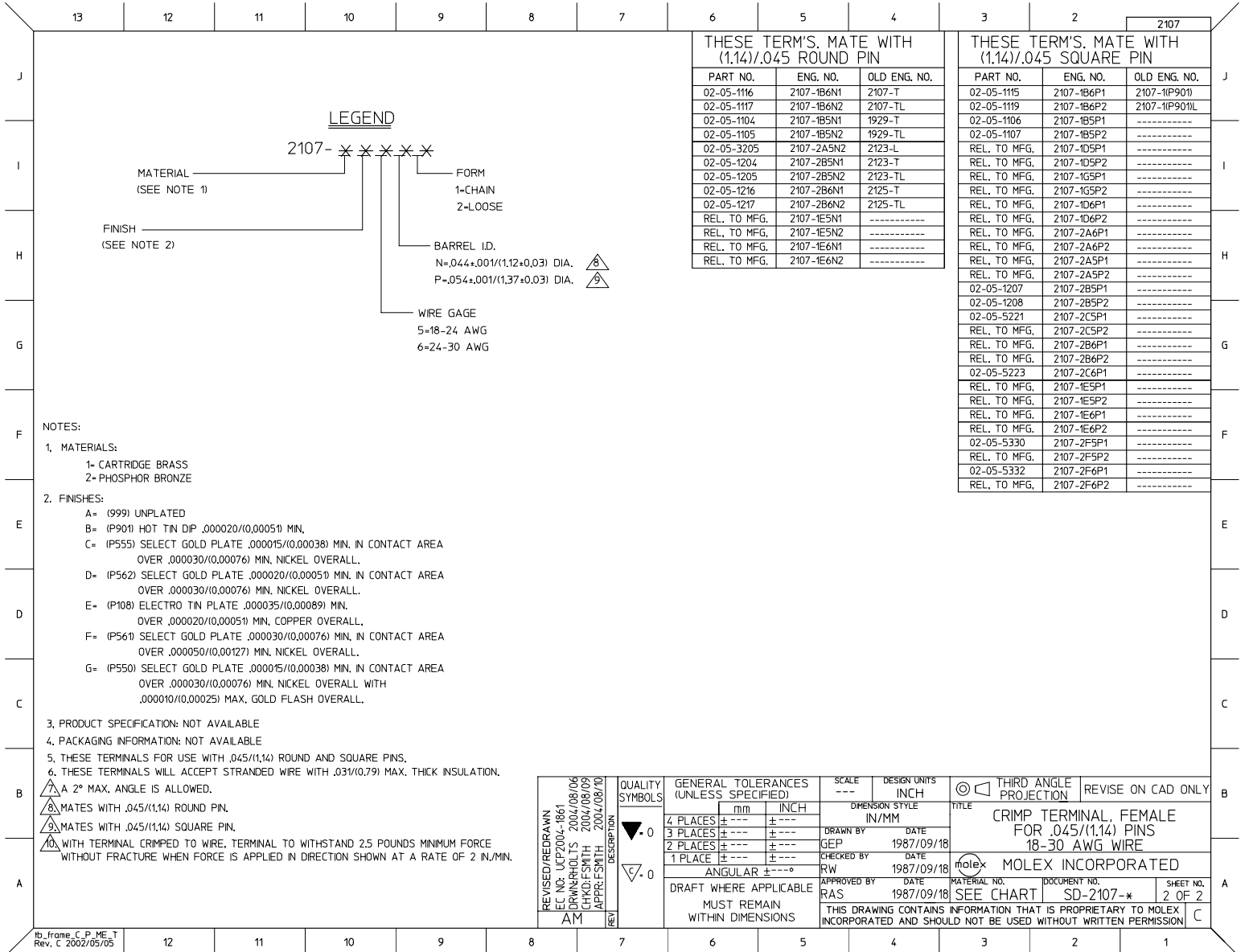
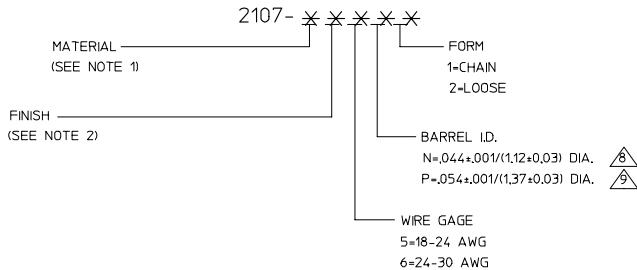


tb\_frame\_C\_P\_ME\_T  
 Rev. C 2002/05/05



**LEGEND**



- NOTES:**
- MATERIALS:**
    - 1- CARTRIDGE BRASS
    - 2- PHOSPHOR BRONZE
  - FINISHES:**
    - A= (999) UNPLATED
    - B= (P901) HOT TIN DIP .000020/(0.0005) MIN.
    - C= (P555) SELECT GOLD PLATE .000015/(0.00038) MIN. IN CONTACT AREA OVER .000030/(0.00076) MIN. NICKEL OVERALL.
    - D= (P562) SELECT GOLD PLATE .000020/(0.0005) MIN. IN CONTACT AREA OVER .000030/(0.00076) MIN. NICKEL OVERALL.
    - E= (P108) ELECTRO TIN PLATE .000035/(0.00089) MIN. OVER .000020/(0.0005) MIN. COPPER OVERALL.
    - F= (P561) SELECT GOLD PLATE .000030/(0.00076) MIN. IN CONTACT AREA OVER .000050/(0.00127) MIN. NICKEL OVERALL.
    - G= (P550) SELECT GOLD PLATE .000015/(0.00038) MIN. IN CONTACT AREA OVER .000030/(0.00076) MIN. NICKEL OVERALL WITH .000010/(0.00025) MAX. GOLD FLASH OVERALL.
  - PRODUCT SPECIFICATION: NOT AVAILABLE
  - PACKAGING INFORMATION: NOT AVAILABLE
  - THESE TERMINALS FOR USE WITH .045/(1.14) ROUND AND SQUARE PINS.
  - THESE TERMINALS WILL ACCEPT STRANDED WIRE WITH .031/(0.79) MAX. THICK INSULATION.
  - A 2° MAX. ANGLE IS ALLOWED.
  - MATES WITH .045/(1.14) ROUND PIN.
  - MATES WITH .045/(1.14) SQUARE PIN.
  - WITH TERMINAL CRIMPED TO WIRE, TERMINAL TO WITHSTAND 2.5 POUNDS MINIMUM FORCE WITHOUT FRACTURE WHEN FORCE IS APPLIED IN DIRECTION SHOWN AT A RATE OF 2 IN./MIN.

THESE TERMS, MATE WITH (1.14)/.045 ROUND PIN

PART NO.	ENG. NO.	OLD ENG. NO.
02-05-1116	2107-1B6N1	2107-T
02-05-1117	2107-1B6N2	2107-TL
02-05-1104	2107-1B5N1	1929-T
02-05-1105	2107-1B5N2	1929-TL
02-05-3205	2107-2A5N2	2123-L
02-05-1204	2107-2B5N1	2123-T
02-05-1205	2107-2B5N2	2123-TL
02-05-1216	2107-2B6N1	2125-T
02-05-1217	2107-2B6N2	2125-TL
REL. TO MFG.	2107-1E5N1	-----
REL. TO MFG.	2107-1E5N2	-----
REL. TO MFG.	2107-1E6N1	-----
REL. TO MFG.	2107-1E6N2	-----

THESE TERMS, MATE WITH (1.14)/.045 SQUARE PIN

PART NO.	ENG. NO.	OLD ENG. NO.
02-05-1115	2107-1B6P1	2107-1P901
02-05-1119	2107-1B6P2	2107-1P901L
02-05-1106	2107-1B5P1	-----
02-05-1107	2107-1B5P2	-----
REL. TO MFG.	2107-1D5P1	-----
REL. TO MFG.	2107-1D5P2	-----
REL. TO MFG.	2107-1G5P1	-----
REL. TO MFG.	2107-1G5P2	-----
REL. TO MFG.	2107-1D6P1	-----
REL. TO MFG.	2107-1D6P2	-----
REL. TO MFG.	2107-2A6P1	-----
REL. TO MFG.	2107-2A6P2	-----
REL. TO MFG.	2107-2A5P1	-----
REL. TO MFG.	2107-2A5P2	-----
02-05-1207	2107-2B5P1	-----
02-05-1208	2107-2B5P2	-----
02-05-5221	2107-2C5P1	-----
REL. TO MFG.	2107-2C5P2	-----
REL. TO MFG.	2107-2B6P1	-----
REL. TO MFG.	2107-2B6P2	-----
02-05-5223	2107-2C6P1	-----
REL. TO MFG.	2107-1E5P1	-----
REL. TO MFG.	2107-1E5P2	-----
REL. TO MFG.	2107-1E6P1	-----
REL. TO MFG.	2107-1E6P2	-----
02-05-5330	2107-2F5P1	-----
REL. TO MFG.	2107-2F5P2	-----
02-05-5332	2107-2F6P1	-----
REL. TO MFG.	2107-2F6P2	-----

REVISED/REDRAWN EC NO. UCP2004-1861 DRAWN/RHOLTS 2004/08/06 CHKD:FSMITH 2004/08/09 APPR:FSMITH 2004/08/10	QUALITY SYMBOLS 0 0	GENERAL TOLERANCES (UNLESS SPECIFIED)		SCALE ---	DESIGN UNITS INCH	THIRD ANGLE PROJECTION	REVISE ON CAD ONLY
		DRAFT WHERE APPLICABLE MUST REMAIN WITHIN DIMENSIONS		DIMENSION STYLE IN/MM		TITLE CRIMP TERMINAL, FEMALE FOR .045/(1.14) PINS 18-30 AWG WIRE	
AM	DESCRIPTION	4 PLACES ±---	±---	DRAWN BY GEP	DATE 1987/09/18	MOLEX INCORPORATED	
		3 PLACES ±---	±---	CHECKED BY RW	DATE 1987/09/18	MATERIAL NO. SEE CHART	
		2 PLACES ±---	±---	APPROVED BY RAS	DATE 1987/09/18	DOCUMENT NO. SD-2107-*	
		1 PLACE ±---	±---	THIS DRAWING CONTAINS INFORMATION THAT IS PROPRIETARY TO MOLEX INCORPORATED AND SHOULD NOT BE USED WITHOUT WRITTEN PERMISSION			