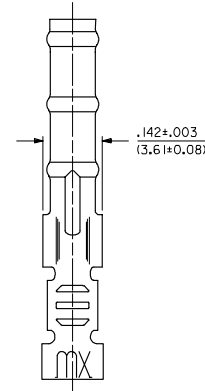
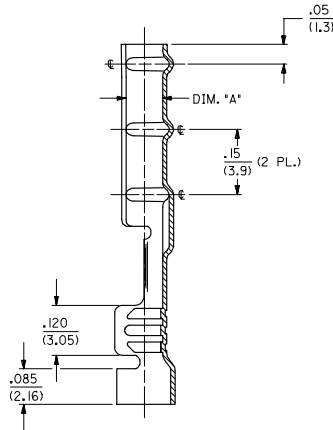
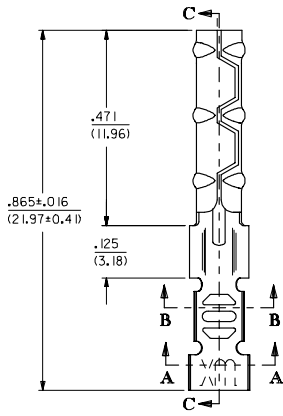
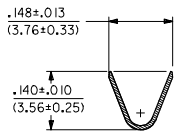


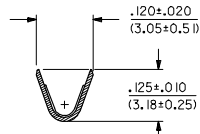
1881-2\*\*\* TERMINAL SHOWN (16-24 AWG)  
SEE SHEET 2 FOR 1881-3\*\*\* TERMINAL



SECTION C-C



SECTION A-A



SECTION B-B

UPDATE TITLE BLOCK  
EC NO. UCP2006-0215  
DRAWN: JONE 2/05/08/05  
CHECKED: CHADLER 2/05/08/08  
APPROVED: TH 2/05/08/10

QUALITY SYMBOLS  
▽=0  
▽=0

GENERAL TOLERANCES (UNLESS SPECIFIED)	
mm	INCH
4 PLACES ±---	±---
3 PLACES ±---	±.010
2 PLACES ±0.25	±.014
1 PLACE ±0.36	±---
ANGULAR ±1/2°	

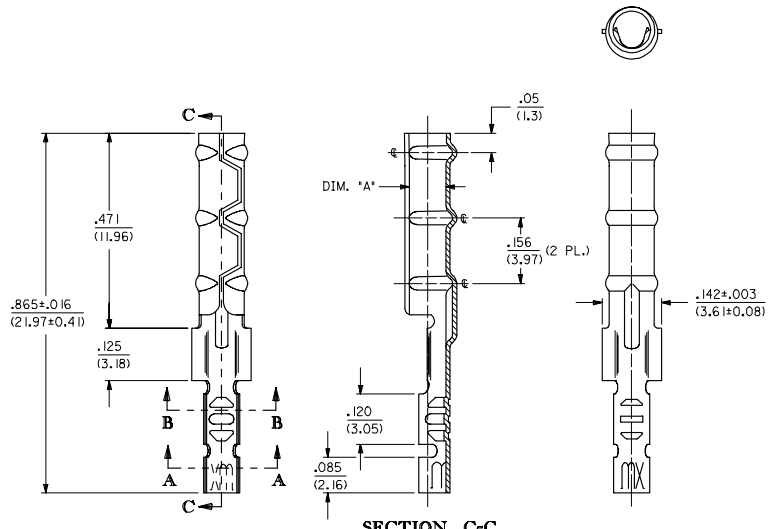
DIMENSION STYLE		SCALE	DESIGN UNITS	THIRD ANGLE PROJECTION
IN/MM	DATE	6:1	INCH	
DRAWN BY: SWC	DATE: 3/11/91			
CHECKED BY: RW	DATE: 3/11/91			
APPROVED BY: SWF	DATE: 3/11/91			

TITLE: CRIMP TERMINAL SOCKET, CLASP CON		SHEET NO.: 1 OF 2	
MATERIAL NO. SEE CHART		DOCUMENT NO. SD-1881-*	
MOLEX MOLEX INCORPORATED			
THIS DRAWING CONTAINS INFORMATION THAT IS PROPRIETARY TO MOLEX INCORPORATED AND SHOULD NOT BE USED WITHOUT WRITTEN PERMISSION			

2	L1
1	L1
SHT/REV	

CHART		
PART NUMBER	ENG. NUMBER	DIMENSION 'A' (DIA.)
02-08-1102	1881-2L 1A	.085/.090 (2.16/2.29)
02-08-1101	1881-2C 1A	
02-08-1106	1881-2L 1B	.083/.088 (2.11/2.24)
02-08-1105	1881-2C 1B	
02-08-1104	1881-3L 1A	.085/.090 (2.16/2.29)
02-08-1103	1881-3C 1A	
02-08-1107	1881-4C 1A	.085/.090 (2.16/2.29)
02-08-1108	1881-4L 1A	

1881-3\*\*\* TERMINAL SHOWN (24-30 AWG)  
SEE SHEET 1 FOR 1881-2\*\*\* TERMINAL



**LEGEND**

1881-\*\*\*

CRIMP STYLE  
2 = 16-24 AWG  
3 = 24-30 AWG  
4 = 22 AWG

FORM  
L = LOOSE  
C = CHAIN

BARREL I.D.  
A = .085/.090 BARREL I.D.

FINISH  
(\*P\* PRECEDING FINISH NO. DESIGNATES PREPLATED MATERIAL)  
1 = P901 - HOT TIN DP; .000020/(0.00051) MIN.

- NOTES:
1. MATERIAL: CARTRIDGE BRASS
  2. FINISH: SEE LEGEND
  3. PRODUCT SPECIFICATION: N/A
  4. PACKAGING SPECIFICATION: N/A
  5. 1881 'CLASPCON' SERIES TERMINAL WITH THE STANDARD BARREL I.D. IS INTENDED FOR MATING TO .093/(2.36) DIA. P.C. BOARD PINS.
  6. INITIAL EXTRACTION FORCE TO BE 4.0±1.5 LBS. FROM AN .093/.092 / (2.36/2.34) DIA. PIN AND 2 LBS. MIN. AFTER THE 10TH EXTRACTION ON STANDARD BARREL I.D.

OBSOLETE 02-08-1102 EC NO: UCP2006-0275 DRAWN: JONE 2005/08/05 CHECKED: RYAN 2005/08/05 APPROVED: SMITH 2005/08/05	QUALITY SYMBOLS ▽=0 ▽=0	GENERAL TOLERANCES (UNLESS SPECIFIED)	DIMENSION STYLE IN/MM	SCALE 6:1	DESIGN UNITS INCH	THIRD ANGLE PROJECTION
		4 PLACES ±.005 ±.005 3 PLACES ±.010 ±.010 2 PLACES ±.025 ±.014 1 PLACE ±.036 ±.014	DRAWN BY SWC DATE 3/11/91	TITLE CRIMP TERMINAL SOCKET, CLASPCON		
		ANGULAR ±1/2°	CHECKED BY RW DATE 3/11/91			
			APPROVED BY SWF DATE 3/11/91	MATERIAL NO. SEE CHART	DOCUMENT NO. SD-1881-*	SHEET NO. 2 OF 2

DRAFT WHERE APPLICABLE MUST REMAIN WITHIN DIMENSIONS

THIS DRAWING CONTAINS INFORMATION THAT IS PROPRIETARY TO MOLEX INCORPORATED AND SHOULD NOT BE USED WITHOUT WRITTEN PERMISSION