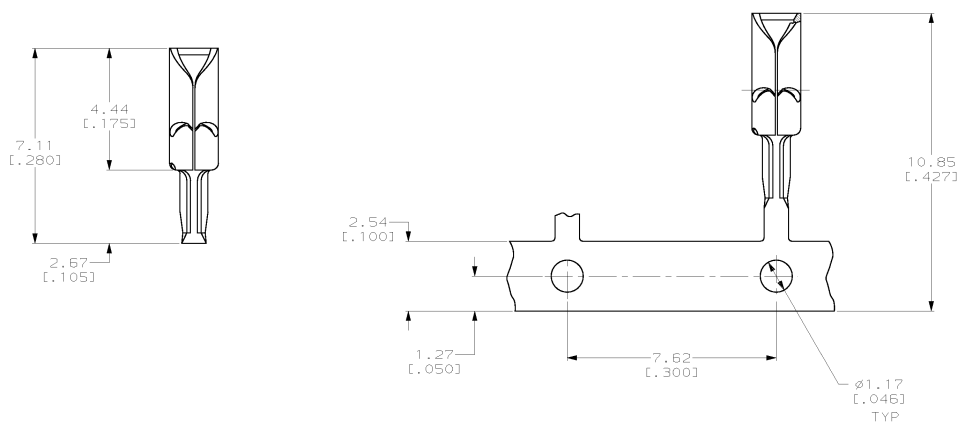
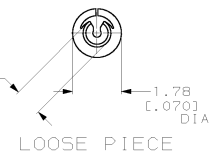


THIS DRAWING IS UNPUBLISHED. RELEASED FOR PUBLICATION  
 (C) COPYRIGHT IS BY AMP INCORPORATED. ALL RIGHTS RESERVED.

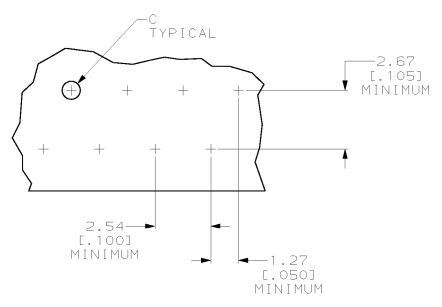
LOC	QTY	REV	DESCRIPTION	DATE	BY	APP'D
AA	28					
		D	REDRAWN PER 063A-0234-00	31MAY00	JR	EH



1. ALL DIMENSIONS SHOWN ARE FOR REFERENCE ONLY.
  2. FOR USE IN PRINTED CIRCUIT, 3/64-1/16 THICK.
  3. WIRE RANGE: 26-28 AWG (SOLID) OR (STRANDED) WIRE. MAXIMUM OUTSIDE DIAMETER 0.91 [.036].
  4. FURNISHED AS LOOSE PIECE OR STRIP MOUNTED BY SMALL END OF BARREL.
  5. TERMINAL SHALL ACCOMMODATE ONE OR TWO WIRES OF THE SAME TYPE AND WITHIN +/- ONE WIRE GAUGE SIZE.
  6. STRIPE OF NICKEL SOLDER RESIST INSIDE OF TERMINAL PREVENTS SOLDER WICKING.
- SELECTIVELY PREPLATED 0.00381 [.000150] MIN MATTE TIN-LEAD OVER 0.00127 [.000050] MIN MATTE NICKEL.



LOOSE PIECE



SUGGESTED PRINTED CIRCUIT BOARD MOUNTING DIMENSIONS  
 SCALE 8:1

0.86-0.96 [.034-.038]	0.91-1.02 [.036-.040]	STRIP MOUNTED	553015-2
		LOOSE PIECE	553015-1
PUNCHED HOLE		DRILLED HOLE	
DIMENSION C		DESCRIPTION	PART NUMBER

DIMENSIONS mm (INCHES)		DIMENSIONS STRIP MOUNTED		DIMENSIONS LOOSE PIECE	
0	PLC	++	+	+	+
1	PLC	++	+	+	+
2	PLC	++	+	+	+
3	PLC	++	+	+	+
4	PLC	++	+	+	+
5	PLC	++	+	+	+
6	PLC	++	+	+	+
7	PLC	++	+	+	+
8	PLC	++	+	+	+
9	PLC	++	+	+	+
10	PLC	++	+	+	+
11	PLC	++	+	+	+
12	PLC	++	+	+	+
13	PLC	++	+	+	+
14	PLC	++	+	+	+
15	PLC	++	+	+	+
16	PLC	++	+	+	+
17	PLC	++	+	+	+
18	PLC	++	+	+	+
19	PLC	++	+	+	+
20	PLC	++	+	+	+
21	PLC	++	+	+	+
22	PLC	++	+	+	+
23	PLC	++	+	+	+
24	PLC	++	+	+	+
25	PLC	++	+	+	+
26	PLC	++	+	+	+
27	PLC	++	+	+	+
28	PLC	++	+	+	+
29	PLC	++	+	+	+
30	PLC	++	+	+	+
31	PLC	++	+	+	+
32	PLC	++	+	+	+
33	PLC	++	+	+	+
34	PLC	++	+	+	+
35	PLC	++	+	+	+
36	PLC	++	+	+	+
37	PLC	++	+	+	+
38	PLC	++	+	+	+
39	PLC	++	+	+	+
40	PLC	++	+	+	+
41	PLC	++	+	+	+
42	PLC	++	+	+	+
43	PLC	++	+	+	+
44	PLC	++	+	+	+
45	PLC	++	+	+	+
46	PLC	++	+	+	+
47	PLC	++	+	+	+
48	PLC	++	+	+	+
49	PLC	++	+	+	+
50	PLC	++	+	+	+
51	PLC	++	+	+	+
52	PLC	++	+	+	+
53	PLC	++	+	+	+
54	PLC	++	+	+	+
55	PLC	++	+	+	+
56	PLC	++	+	+	+
57	PLC	++	+	+	+
58	PLC	++	+	+	+
59	PLC	++	+	+	+
60	PLC	++	+	+	+
61	PLC	++	+	+	+
62	PLC	++	+	+	+
63	PLC	++	+	+	+
64	PLC	++	+	+	+
65	PLC	++	+	+	+
66	PLC	++	+	+	+
67	PLC	++	+	+	+
68	PLC	++	+	+	+
69	PLC	++	+	+	+
70	PLC	++	+	+	+
71	PLC	++	+	+	+
72	PLC	++	+	+	+
73	PLC	++	+	+	+
74	PLC	++	+	+	+
75	PLC	++	+	+	+
76	PLC	++	+	+	+
77	PLC	++	+	+	+
78	PLC	++	+	+	+
79	PLC	++	+	+	+
80	PLC	++	+	+	+
81	PLC	++	+	+	+
82	PLC	++	+	+	+
83	PLC	++	+	+	+
84	PLC	++	+	+	+
85	PLC	++	+	+	+
86	PLC	++	+	+	+
87	PLC	++	+	+	+
88	PLC	++	+	+	+
89	PLC	++	+	+	+
90	PLC	++	+	+	+
91	PLC	++	+	+	+
92	PLC	++	+	+	+
93	PLC	++	+	+	+
94	PLC	++	+	+	+
95	PLC	++	+	+	+
96	PLC	++	+	+	+
97	PLC	++	+	+	+
98	PLC	++	+	+	+
99	PLC	++	+	+	+
100	PLC	++	+	+	+

AMP 1471-9 REV 039494  
 26-MAY-00 14:18:56 csp13402 /home/csp13402/ohmed

553015