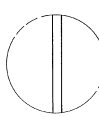
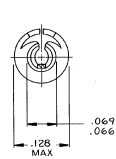
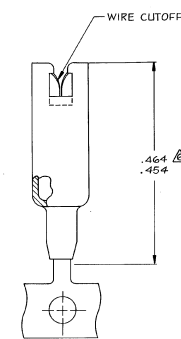
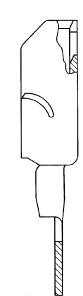
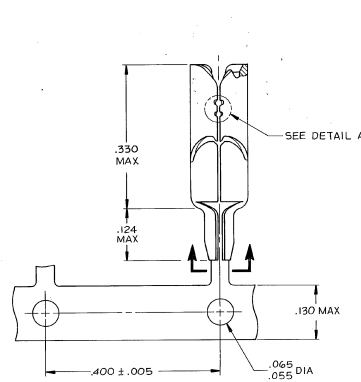
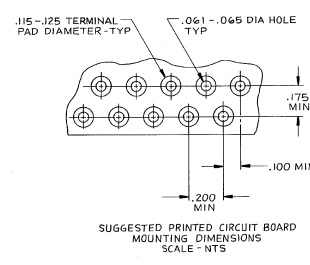


THIS DRAWING IS UNPUBLISHED. RELEASED FOR PUBLICATION. 19
 © Copyright 19 by AMP INCORPORATED, SPRINGHOUSE, PA. ALL INFORMATION HEREIN IS UNCLASSIFIED. AMP PRODUCTS ARE COVERED BY U.S. AND FOREIGN PATENTS AND/OR PENDING PATENTS.

REV. NO.		DESCRIPTION	DATE	APPROVED
1	U	OB51-41 EC 0502-0121-96	3/19/79	AA 27



DETAIL A
 SCALE=40:1
 FOR -3 AND -4 ONLY



SUGGESTED PRINTED CIRCUIT BOARD
 MOUNTING DIMENSIONS
 SCALE - NTS

- FOR USE IN PRINTED CIRCUIT BOARDS .062-.094 THICK.
 - WIRE RANGE: 22-26 AWG SOLID OR STRANDED WIRE. MAXIMUM INSULATION DIAMETER OF .086 IS ACCEPTABLE FOR MOST APPLICATIONS.
 - TERMINAL SHALL ACCOMMODATE ONE OR TWO WIRES OF THE SAME TYPE AND WITHIN PLUS OR MINUS ONE WIRE GAUGE SIZE. EXAMPLE: 24 AWG MAY BE MIXED WITH EITHER 26 OR 22 AWG.
 - USE INSERTION TOOL, PART NUMBER 231890-1.
- ⚠ WHEN USING TEFLON INSULATED WIRES USE 554935-1 OR 554935-2.
- ⚠ CUT-OFF DIMENSION FOR LOOSE PIECE PARTS ONLY.

OBSOLETE	230549-1	LOOSE PIECE	AS SHOWN WITH DETAIL A	-3
	1-453973-4	STRIP MOUNTED		-2
OBSOLETE	230549-1	LOOSE PIECE	AS SHOWN	554935-1
TERMINAL INSERTION TOOL		DESCRIPTION		PART NO
UNLESS OTHERWISE SPECIFIED DIMENSIONS ARE IN INCHES. TOLERANCES ARE: DECIMALS: .015; FRACTIONS: AS SHOWN.				
CONTRACT NO.		AMP INCORPORATED		
DATE: 8-21-80		PART NO. 1785		
MATERIAL: PHOS BRONZE		NAME: TERMINAL, .125 DIA W/ CUTOFF, AMP BARREL		
FINISH: PRE-TINNED		SIZE: D	FSCM NO: 00779	DRAWING NO: 554935
OTHER APPD:		SHEET 1 OF 1		

CUSTOMER DRAWING