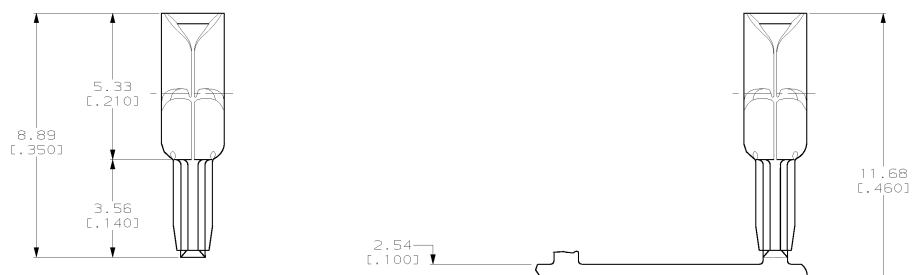


4 3 2 1

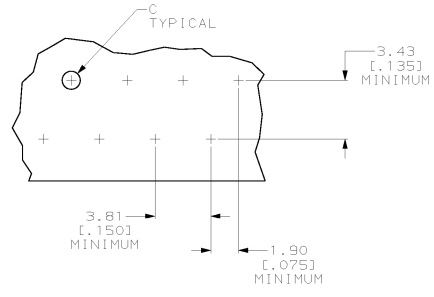
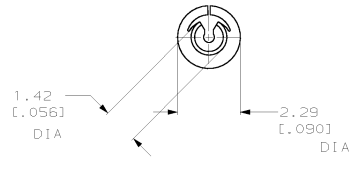
THIS DRAWING IS UNPUBLISHED. RELEASED FOR PUBLICATION
 (C) COPYRIGHT IS BY AMP INCORPORATED. ALL RIGHTS RESERVED.

LOC	QTY	REV	DESCRIPTION	DATE	BY	APP'D
HM	00	F	REV; EC 0B40-0280-00	13DEC00	GG	BT



LOOSE PIECE

STRIP MOUNTED



SUGGESTED PRINTED CIRCUIT BOARD
 MOUNTING DIMENSIONS
 SCALE 8:1

1. ALL DIMENSIONS SHOWN ARE FOR REFERENCE ONLY.
 2. FOR USE IN PRINTED CIRCUIT BOARDS 3/64, 1/16 AND 3/32 THICK.
 3. WIRE RANGE: 22-28 AWG (SOLID) OR (STRANDED) WIRE. MAXIMUM OUTSIDE DIAMETER 1.34 [0.053].
 4. FURNISHED AS LOOSE PIECE OR STRIP MOUNTED BY SMALL END OF BARREL.
 5. TERMINAL SHALL ACCOMMODATE ONE OR TWO WIRES OF THE SAME TYPE AND WITHIN +/- ONE WIRE GAUGE SIZE.
 6. STRIPE OF NICKEL SOLDER RESIST INSIDE OF TERMINAL PREVENTS SOLDER WICKING.
- SELECTIVELY PREPLATED 0.00381 [0.00150] MIN MATTE TIN-LEAD OVER 0.00127 [0.000050] MIN MATTE NICKEL.

1.22-1.32 [0.048-.052]	1.27-1.37 [0.050-.054]	STRIP MOUNTED	552967-2
PUNCHED HOLE	DRILLED HOLE	LOOSE PIECE	552967-1
DIMENSION C		DESCRIPTION	PART NUMBER

DIMENSIONS		FINISHES		MATERIAL		FINISH		DRAWING		CUSTOMER DRAWING	
min (INCHES)		0 PLC	++	PHOS	BRONZE	0	++	A2	00779	SCALE	10:1
		1 PLC	++			1	++			SHEET	1 OF 1
		2 PLC	++			2	++			REV	F
		3 PLC	++			3	++				
		4 PLC	++			4	++				
		5 PLC	++			5	++				
		6 PLC	++			6	++				
		7 PLC	++			7	++				
		8 PLC	++			8	++				
		9 PLC	++			9	++				
		10 PLC	++			10	++				
		11 PLC	++			11	++				
		12 PLC	++			12	++				
		13 PLC	++			13	++				
		14 PLC	++			14	++				
		15 PLC	++			15	++				
		16 PLC	++			16	++				
		17 PLC	++			17	++				
		18 PLC	++			18	++				
		19 PLC	++			19	++				
		20 PLC	++			20	++				
		21 PLC	++			21	++				
		22 PLC	++			22	++				
		23 PLC	++			23	++				
		24 PLC	++			24	++				
		25 PLC	++			25	++				
		26 PLC	++			26	++				
		27 PLC	++			27	++				
		28 PLC	++			28	++				
		29 PLC	++			29	++				
		30 PLC	++			30	++				
		31 PLC	++			31	++				
		32 PLC	++			32	++				
		33 PLC	++			33	++				
		34 PLC	++			34	++				
		35 PLC	++			35	++				
		36 PLC	++			36	++				
		37 PLC	++			37	++				
		38 PLC	++			38	++				
		39 PLC	++			39	++				
		40 PLC	++			40	++				
		41 PLC	++			41	++				
		42 PLC	++			42	++				
		43 PLC	++			43	++				
		44 PLC	++			44	++				
		45 PLC	++			45	++				
		46 PLC	++			46	++				
		47 PLC	++			47	++				
		48 PLC	++			48	++				
		49 PLC	++			49	++				
		50 PLC	++			50	++				

AMP 1471-9 REV 03/94/94
 11-DEC-00 08:31:29 csp38035 /home/csp38035/colind

552967