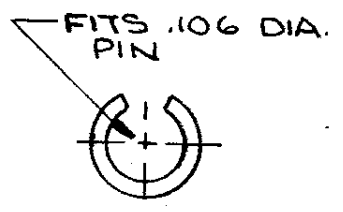
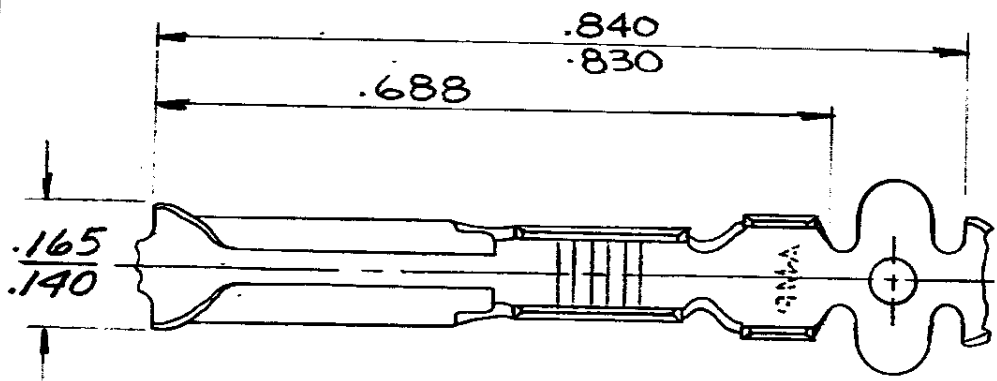
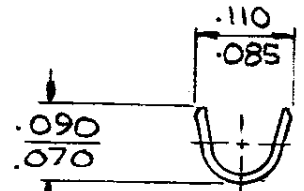
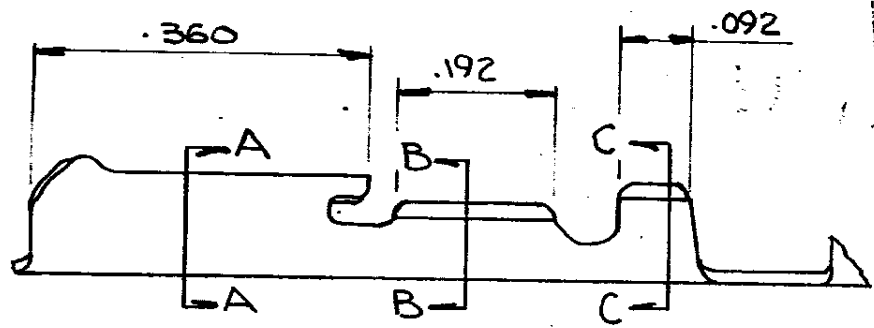


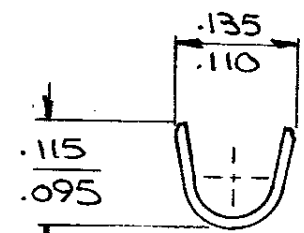
NUMBER 60908



SECT A-A



SECT B-B



SECT C-C

CONTINUOUS STRIP, ON REELS

WIRE SIZE AWG	INSULATION RANGE	PIN DIA. ±.002	MATERIAL AND FINISH	TERMINAL NUMBER
24-20	.075-.100	.106	.012 BRASS-PRE-TIN	60908-1

DIMENSIONS IN INCHES. DO NOT SCALE PRINT.

G	ADDED SEER. A 208L	N/A	King	9/1/62
F	CHANGED DIST. A-47	LE	Kun	9-20-71
E	.165/.140 WAS $\pm .010$	JRK	AET	11/8/69
D	.155 <sup>±.010</sup> WAS .165/.145	JRK	HET	10/2/68
C	ADDED 165/145	EXP	WJ	9/1/63
B	RELEASED	CM	SH	12-1-60
A	REVISED A 695	CNI	RW	7/1/65
	WAS P-28634			
LTR	REVISION RECORD	DR	CHK	DATE

©1965 BY AMP INCORPORATED. ALL RIGHTS RESERVED. AMP PRODUCTS COVERED BY PATENTS AND/OR PATENTS PENDING.

CUSTOMER COPY REFERENCE ONLY

MATERIAL AND FINISH



WIRE RANGE INSULATION

CLASS TYPE

TOLERANCE EXCEPT AS NOTED ± .015 ± 1° 0' SCALE 5-1 LOC AF A NO 60908 REV G

NAME .106 DIA. PIN RECEPTACLE

PRINT DIST 350