

4

3

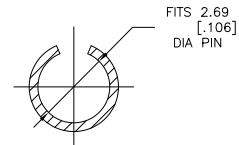
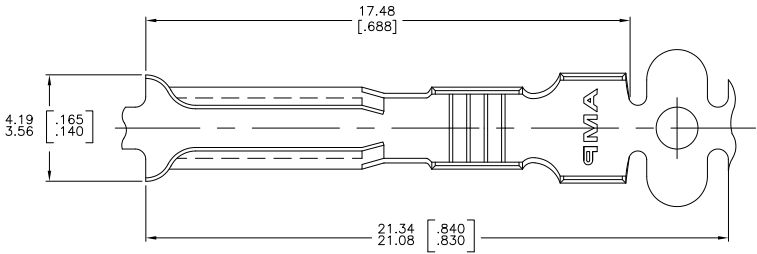
2

1

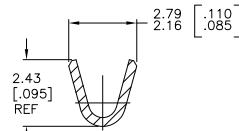
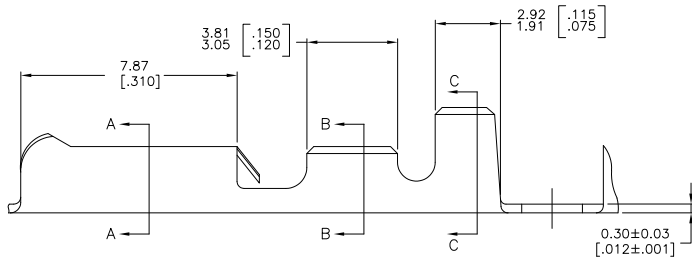
THIS DRAWING IS UNPUBLISHED. RELEASED FOR PUBLICATION
 © COPYRIGHT BY TYCO ELECTRONICS CORPORATION. ALL RIGHTS RESERVED.

LOC	DIST	REVISIONS			
F	LR	DESCRIPTION	DATE	BY	APP'D
AF	50	A1	REDRAWN PER ECR-07-007776	23MAY07	HMR DD

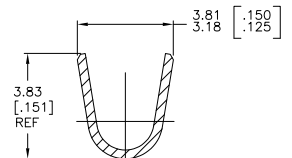
- 1 CONTINUOUS STRIP ON REELS
- 2 INSULATION RANGE: 1.52 [.060] MAX.
- 3 WIRE RANGE: (1) 22 - 18 AWG OR
(2) 22 AWG



SECTION A-A



SECTION B-B



SECTION C-C

2.69±0.05 [.106±.002]	62402-1
PIN DIA	PART NO

THIS DRAWING IS A CONTROLLED DOCUMENT.		DRW: SACHAVENDRA	23MAY07	 Tyco Electronics Corporation Harrisburg, Pa 17105-3608
DIMENSIONS: mm [INCHES]		CHK: DECKER D	23MAY07	
TOLERANCES UNLESS OTHERWISE SPECIFIED:		APP'D: DECKER D	23MAY07	RECEPTACLE, PIN .106 DIA
0 PLG ± .01		PRODUCT SPEC: --	APPLICATION SPEC: --	
1 PLG ± .01		SIZE: A2	CAGE CODE: 00779	DRAWING NO: C-62402
2 PLG ± .01		WEIGHT: --	RESTRICTED TO: --	
3 PLG ± 0.25[.010]		CUSTOMER DRAWING		
4 PLG ± .01		SCALE: 10:1		
ANGLES ± .5		SHEET: 1 OF 1		
FINISH: PRE-TIN		REV: A1		

AMP 1471-9 REV 31MM2000

62402

A