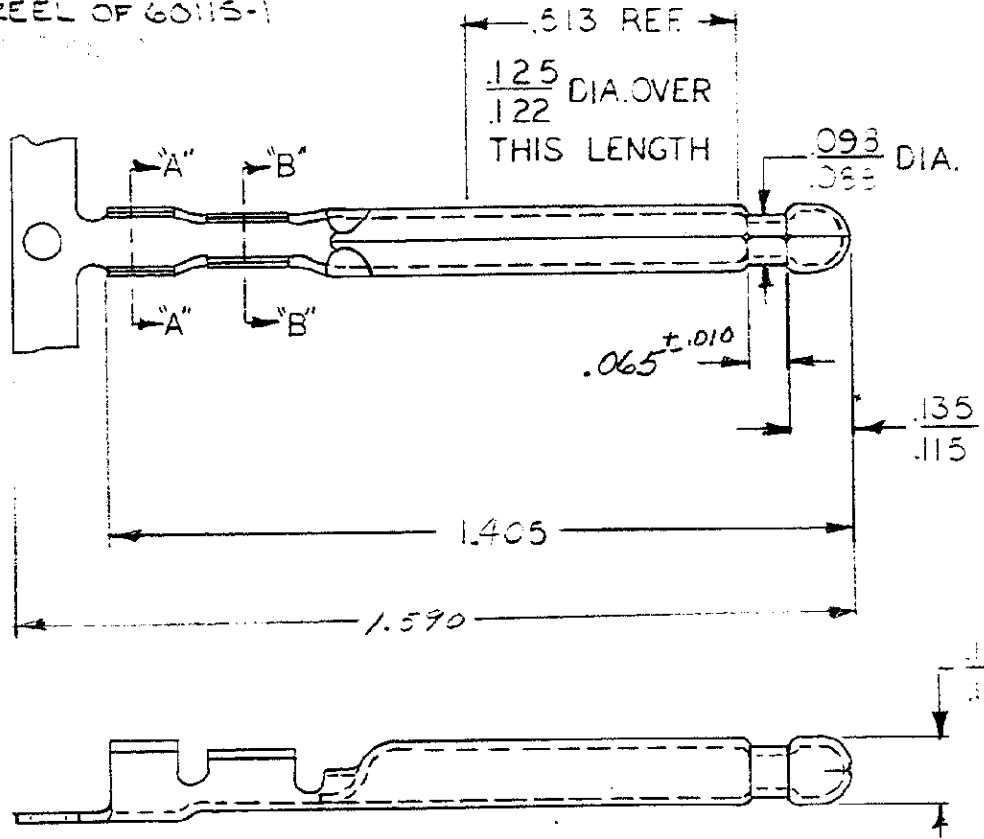


DRAWING MADE IN AMERICAN PROJECTION

NUMBER 60115

REVERSE REEL OF 60115-1
2.



PART	FINISH
60115-1	NONE
60115-2	SILVER
60115-3	PRE-TIN
60115-4 Δ	NONE

DIMENSIONS IN INCHES. DO NOT SCALE PRINT.

K	REV PER AF-6703				
J	ADD 60115-4	TTI	2/21/72	2-21-72	
H	REV 60115-3	AF	6-3-64	6-3-64	
G	OBE 60115-2	A4534	2/1/61	2-25-60	
F	REVISED	A4345	2/1/61	10-25-57	
E	REVISED	A3094	2/1/61	8-27-55	
D	ADD 60115-3	TTI	7/30/72	7/30/72	
C	REVISED	A2912	2/1/61	1-22-58	
B	REDRAWN	A2058	2/1/61	2/1/72	
LTR	REVISION RECORD	ECN	DR	CHK	DATE
DR	2-4-71	DE			
LK	ESPENSHADE	APP			
CHK	KW Smith				

©1960 BY AMP INCORPORATED, ALL RIGHTS RESERVED. AMP PRODUCTS COVERED BY PATENTS AND/OR PATENTS PENDING.

MATERIAL AND FINISH
.016 BRASS
SEE TABLE

WIRE RANGE INSULATION
22-20 1090-375

TOLERANCE EXCEPT AS NOTED $\pm .015$ SCALE $\pm 1^\circ$

LOG AF **A** NO **60115**

NAME **BLANKET PIN - .125 DIA.**

CUSTOMER COPY REFERENCE ONLY

AMP AMP INCORPORATED HARRISBURG, PENNA.

CLASS — H —

TYPE — H —

PRINT 50