

4

3

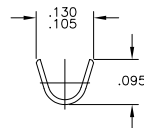
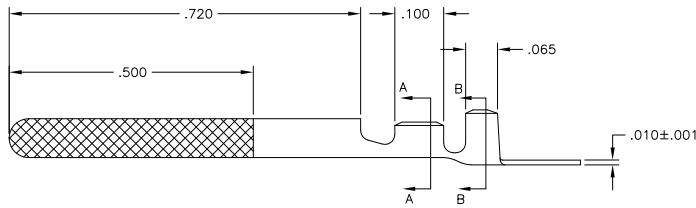
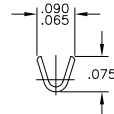
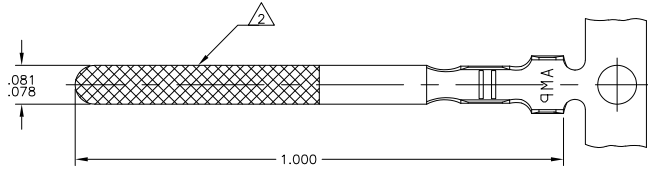
2

1

THIS DRAWING IS UNPUBLISHED. RELEASED FOR PUBLICATION
 © COPYRIGHT BY TYCO ELECTRONICS CORPORATION. ALL INTERNATIONAL RIGHTS RESERVED.

LOC	DIST	REVISIONS			
P	LTR	DESCRIPTION	DATE	BY	APP'D
K1		REDRAWN PER ECR-08-032847	09FEB09	HMR	JR
K2		REVISED PER ECO-09-020932	08SEP09	KK	AEG

- ① CRIMP DONE IN APPLICATOR
- ② GOLD ON AREA MARKED .000015 - .000020 THK. WITH NICKEL OVER ENTIRE PART .000080 THK.
- ③ OBSOLETE PARTS: OBSOLETE CIS STREAMLINING PER D.RENAUD/D.SINISI



REVISION	DESCRIPTION	DATE	BY	APP'D
③ OBSOLETE	GOLD/NICKEL	24-20	.043-.073	62358-5
③ SUPERSEDED	BRIGHT TIN/LEAD OVER NICKEL	24-20	.043-.073	62358-4
③ OBSOLETE	TIN	24-20	.043-.073	62358-3
	FINISH	WIRE AWG	INSULATION RANGE	PART NO
	TIN	24-20	.043-.073	62358-1

THIS DRAWING IS A CONTROLLED DOCUMENT.

DESIGNED BY: SACHDEVENDRA	OFFEROR: SACHDEVENDRA	DATE: 08/20/09
CHKD BY: JEFF RUTH	OFFEROR: JEFF RUTH	DATE: 08/20/09
APPROVED BY: DON DECKER	OFFEROR: DON DECKER	DATE: 08/20/09
PRODUCT SPEC: ---	APPLICATION SPEC: ---	WEIGHT: ---
MATERIAL: BRASS	FINISH: SEE TABLE	SCALE: 7:1
SIZE: A2	CAGE CODE: 00779	DRAWING NO: C-62358
CUSTOMER DRAWING		RESTRICTED TO: ---
SCALE: 7:1		SHEET: 1 of 1
REV: K2		