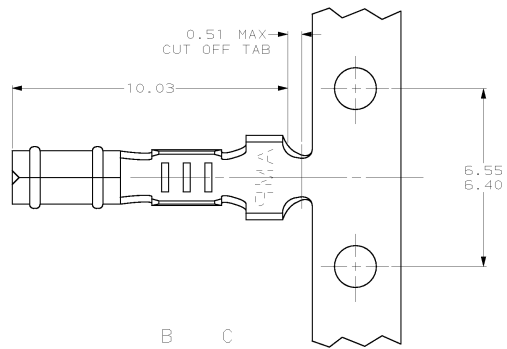


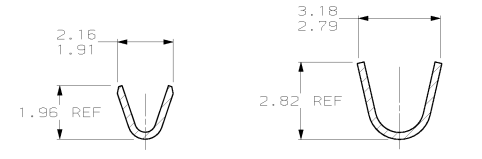
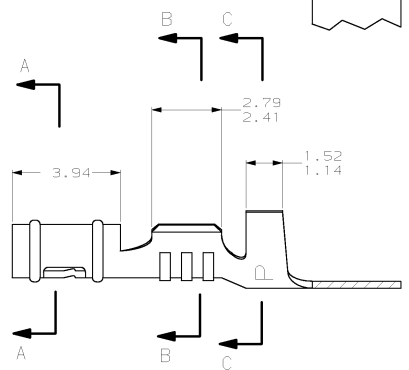
4 3 2 1

THIS DRAWING IS UNCLASSIFIED
(C) COPYRIGHT IS BY AMP INCORPORATED. ALL RIGHTS RESERVED.

REV	DATE	DESCRIPTION	DATE	BY	APP'D
CM	52				
F		REV 8 REDWN PER EC 0130-0146-97	5-19-97	TB	RS



1. WIRE RANGE: 0.2 - 0.6 MM² (24 - 20 AWG)
 2. INSULATION RANGE: 1.52 - 2.29
- △ 0.00203 MIN MATTE TIN PLATING OVER ALL.



MM	IN	MM	IN	MM	IN	MM	IN
1.359	.0535	2.16	.085	3.94	.155	-	-
1.14	.045	1.96	.077	3.18	.125	-	-
0.51	.020	1.91	.075	2.82	.111	-	-
0.25	.010	1.52	.060	2.79	.110	10.03	.395
0.13	.005	1.486	.0585	2.41	.095	6.55	.258
0.00203	.000080	1.47	.058	2.29	.090	6.40	.252

METRIC

THIS DRAWING IS A CONTROLLED DOCUMENT		DWG. T. BECK 5-19-97 CHK. S. SWING 5-19-97 APP. A. BRIDGEMAN 8-28-97 PRODUCT SPEC. 108-1025 APPLICATION SPEC. 114-1008 REV. 1 CUSTOMER DRAWING	AMP AMP Incorporated Harrisburg, PA 17105-3608 RECEPTACLE, .058 DIAMETER, 24-20 AWG, .060-.090 INSULATION, P.C. CONTACT PART NUMBER 60940-2 60940-1 MATERIAL PART NUMBER A200779 C 60940
DIMENSIONS: UNLESS OTHERWISE SPECIFIED, DIMENSIONS ARE IN MILLIMETERS. FINISH: SEE TABLE	DIMENSIONS: UNLESS OTHERWISE SPECIFIED, DIMENSIONS ARE IN INCHES. FINISH: SEE TABLE	SCALE: 10:1 SHEET: 1 OF 1 REV: F	RESTRICTED TO:

AMP 1471-9 REV 27/06/96
19-MAY-97 13:42:46 amp22238 /home/amp22238/junk/redraw.1330