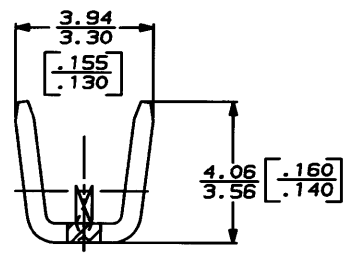
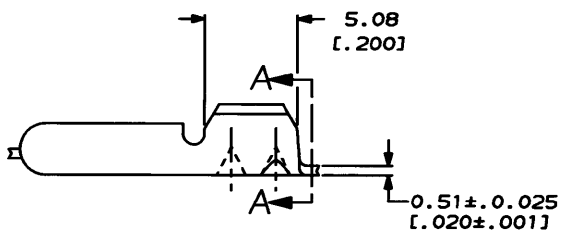
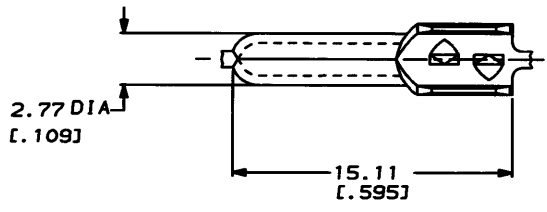


4 3 2 1  
 DRAWING MADE IN THIRD ANGLE PROJECTION  
 THIS DRAWING IS UNPUBLISHED. RELEASED FOR PUBLICATION .19 .  
 © COPYRIGHT 19 BY AMP INCORPORATED. ALL INTERNATIONAL RIGHTS RESERVED.

LOC	DIST	P	F	ZONE	LTR	DESCRIPTION	DATE	APPD
AF	50				E	REV PER AF-8235	12/23/92	PF/GY



SECTION A-A  
 SCALE 10:1

- 1 CONTINUOUS STRIP ON REEL
- 2 CRIMPING INFO: 3.56 [.140] F TYPE CRIMP
- 3 TO BE REELED WITH PAPER.

2.16 [.085] THK	2.16 [.085] X 0.89 [.035] SPECIAL FLAT WIRE	61674-1
INSULATION RANGE	WIRE RANGE	PART NO
DO NOT SCALE PRINT. UNLESS SPECIFIED DIMENSIONS IN INCHES TOLERANCES ON: 2 PLG DEC ± 0.38 [.015] ANGLES ±	DR 12/11/92 P CORREY CHK 12/13/92 JE BHM APPD 12/13/92 G YETTS APPD 12/13/92 S DSD PRODUCT SPEC	AMP INCORPORATED Harrisburg, Pa. 17105
MATERIAL #2 HARD BRASS	FINISH	PIN, INSULATION PIERCING, 2.99 [.109] DIA
	APPLICATION SPEC	SIZE B
	WEIGHT	CAGE CODE 00779
		DRAWING NO 61674
		SCALE 5:1
		SHEET 1 OF 1

**METRIC**