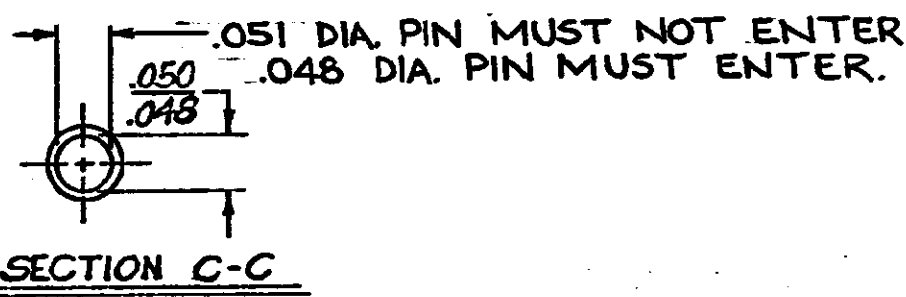
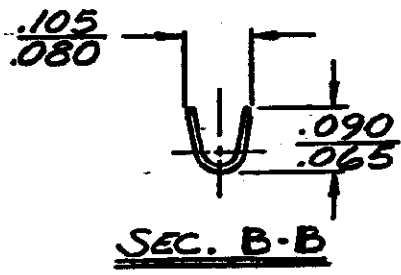
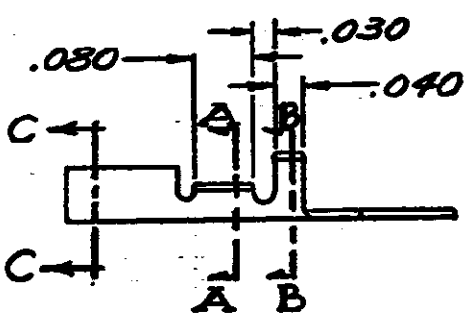
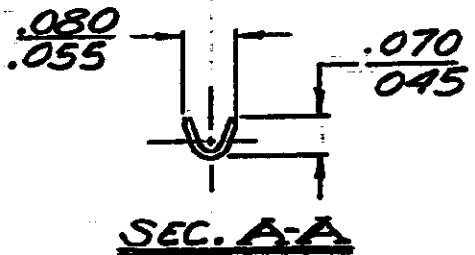
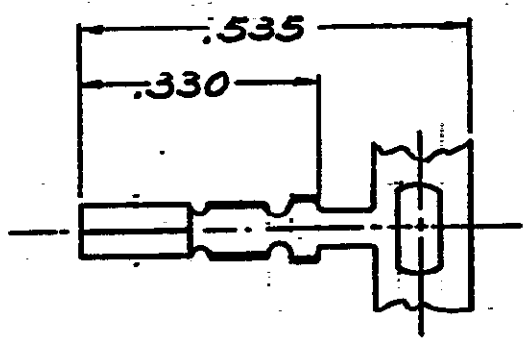


DRAWING MADE IN AMERICAN PROJECTION

NUMBER 61547



DIMENSIONS IN INCHES. DO NOT SCALE PRINT.

<del>.008 PHOS. BRZ. - GOLD</del>	<del>61547-4</del>
.008 PHOS. BRZ. - PRETIN	61547-2
<del>.008 BRASS - PRETIN</del>	<del>61547-1</del>
MAT'L & FINISH	PART. NO.

J	OBS-1 0304-93	BY	9/7/67
H	ADDED NOTE PER A-47	BY	8-22-67
G	OBS. -4 A 4515	BY	2-5-68
F	ADDED -4	TTI	5/6/67
E	REVISED	A-47	7/2/67
D	REVISED WIRE RANGE	A-47	8/5/67
C	CHANGED DIST.	A-47	7-20-67
B	ADDED -2	6360	3/2/70
A	REMOVED HAND STAMP RELEASED	M-1427	4/2/69
TR	REVISION RECORD	ECN	DATE

©1969 BY AMP INCORPORATED, ALL RIGHTS RESERVED. AMP PRODUCTS COVERED BY PATENTS AND/OR PATENTS PENDING.

CUSTOMER COPY REFERENCE ONLY

MATERIAL AND FINISH  
SEE TABLE

**AMP** AMP INCORPORATED HARRISBURG, PENNSA.

WIRE RANGE INSULATION TYPE  
#32-#26 .060 MAX

CLASS  TYPE

TOLERANCE EXCEPT AS NOTED ±.015 ±1% 4-1

LOT NO 61547

DR J.R. KINKLE DE Kinkle 1-14-69  
APP

NAME .050 DIA PIN RECEPTACLE