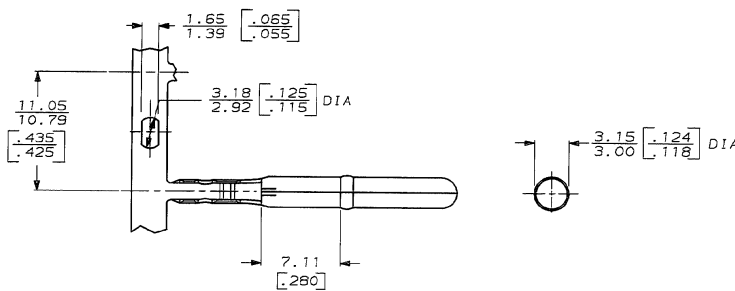
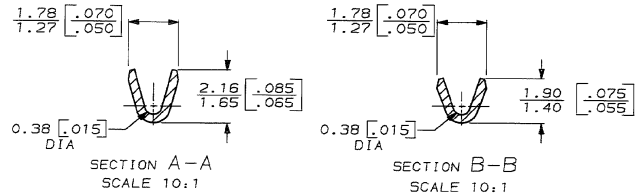
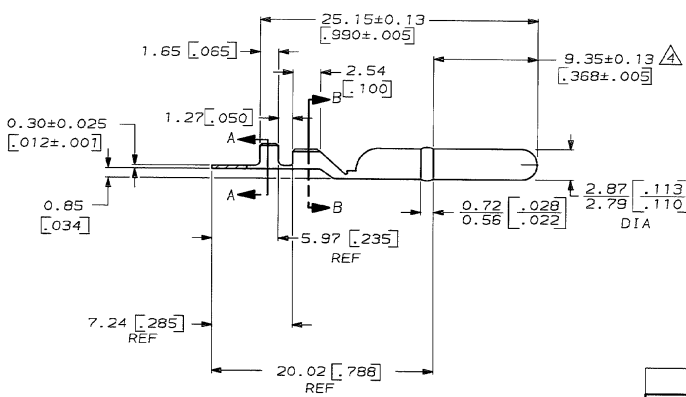


DRAWING MADE IN THIRD ANGLE PROJECTION  
 THIS DRAWING IS UNPUBLISHED. RELEASED FOR PUBLICATION  
 © COPYRIGHT 19 BY AMP INCORPORATED. ALL INTERNATIONAL RIGHTS RESERVED.

| LOC | DIST | P | F | ZONE | LTR | REVISIONS         | DATE    | APPD  |
|-----|------|---|---|------|-----|-------------------|---------|-------|
| AF  | 50   |   |   |      |     | E REV PER 0190-93 | 6/22/93 | PF/GY |



- CONTINUOUS STRIP ON REELS
- DIMENSIONS IN BRACKETS ARE IN INCHES
- SEAM OPENING TO BE 0.076 [.003] MAX OVER ENTIRE LENGTH OF PIN
- 2.79-2.87 [.110-.113] DIA APPLIES OVER THIS LENGTH
- PARTS MUST MEET 90° BEND TOWARDS SEAM ON MATING PIN SIDE OF 0.72 [.028] BEAD WITHOUT COMPLETELY BREAKING OFF



| METRIC |        |                    |      |        |            |            |
|--------|--------|--------------------|------|--------|------------|------------|
| F      | 1.07   | 3.56               | F    | 1.07   | .81 [.032] | .13 [.005] |
|        | [.042] | [.140]             |      | [.042] | .72 [.030] | .09 [.004] |
|        |        |                    |      |        | .74 [.028] | .09 [.004] |
| TYPE   | WIDTH  | STRIP LENGTH ±.015 | TYPE | WIDTH  | HEIGHT     | WIRE       |
| INSUL  | BARREL | CRIMP              | WIRE | BARREL | CRIMP      |            |

|                                                                                                            |  |                                        |  |                  |  |
|------------------------------------------------------------------------------------------------------------|--|----------------------------------------|--|------------------|--|
| 1.15-0.63 [.045-.025]                                                                                      |  | 0.05-0.12mm <sup>2</sup> [30-26]       |  | 63493-1          |  |
| INSULATION RANGE                                                                                           |  | WIRE SIZE                              |  | PART NO          |  |
| DO NOT SCALE PRINT. UNLESS SPECIFIED DIMENSIONS IN INCHES TOLERANCES ON 1 2 PLC DEC ± 0.25 (.010) ANGLES ± |  |                                        |  |                  |  |
| DR 6/8/88 P. FORTNEY                                                                                       |  | AMP INCORPORATED Harrisburg, Pa. 17105 |  | NAME             |  |
| CHK 6/9/88 MS FEHER                                                                                        |  |                                        |  | .112 DIA PIN     |  |
| APPD 6/9/88 0 DECKER                                                                                       |  |                                        |  | SIZE C           |  |
| APPD 6/9/88 TL SHUTTER                                                                                     |  |                                        |  | FSCM NO 00779    |  |
| PRODUCT SPEC                                                                                               |  |                                        |  | DRAWING NO 63493 |  |
| FINISH PRE-TIN                                                                                             |  |                                        |  | SCALE 4:1        |  |
| APPLICATION SPEC                                                                                           |  |                                        |  | SHEET 1 OF 1     |  |
| WEIGHT                                                                                                     |  |                                        |  |                  |  |

AMP 1471-6 REV 3-87  
 22-JUN-93 09:43:12 amp17795 //files/dwg/2122/dwg2122/u.pin-reser

CUSTOMER DRAWING