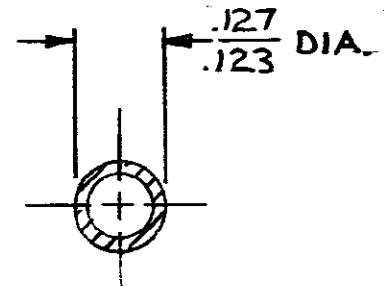
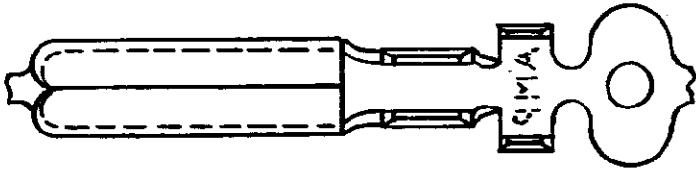


DRAWING MADE IN AMERICAN PROJECTION

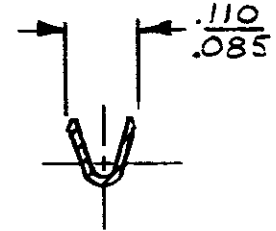
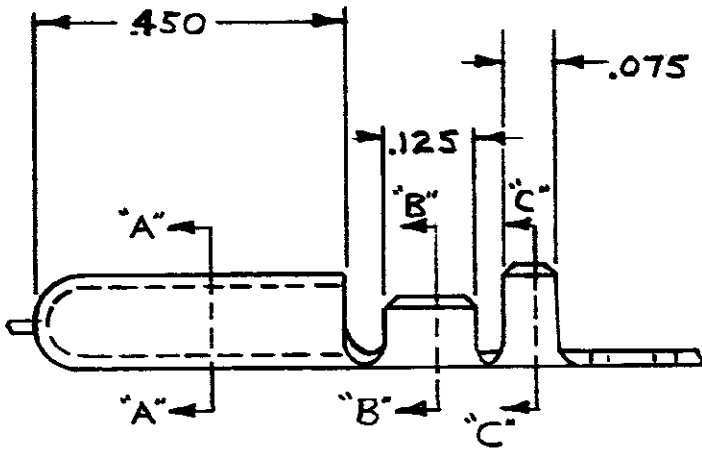
NUMBER 62074

0

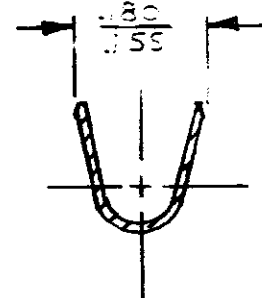
WAS P72-7244



SECTION "A-A"



SECTION "B-B"



SECTION "C-C"

CONTINUOUS STRIP OF WIRE

PART NUMBER

62074-1

Unpublished drawings are hereby acknowledged without written permission of AMP Incorporated.

©1972 BY AMP INCORPORATED. ALL RIGHTS RESERVED. AMP PRODUCTS COVERED BY PATENTS AND/OR PATENTS PENDING

CUSTOMER COPY REFERENCE ONLY

MATERIAL AND FINISH
.016 BRASS
NONE



AMP INCORPORATED
HARRISBURG, PENNA.

CLASS ——— # ———

WIRE RANGE INSULATION
24-20 1060-.03

TYPE ——— # ———

TOLERANCE EXCEPT AS NOTED
± .015 ± 1°

SCALE
4-1

LOC
AF

NO

62074

REV
A

NAME
.125 DIA. PIN

APPROVED L. K. ESPENSHADE 8/8/72	DESIGNED B. OLSSON 6-26-72
CHECKED R. S. SMITH 4/8/72	APP B. OLSSON 6-26-72