

4

3

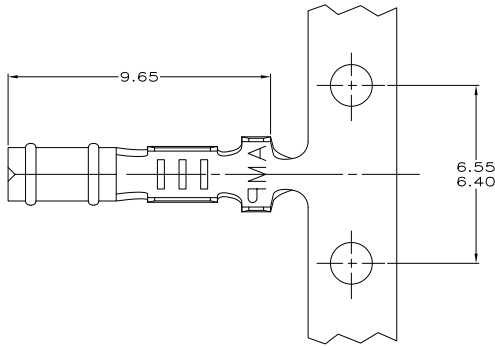
2

1

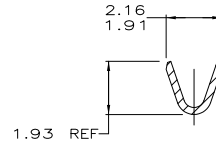
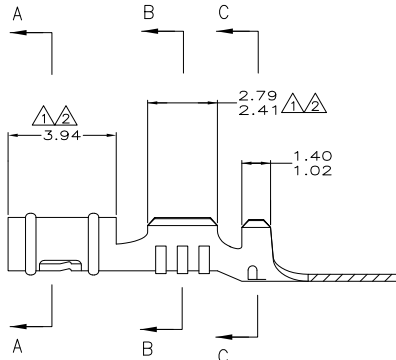
THIS DRAWING IS UNPUBLISHED. RELEASED FOR PUBLICATION. ALL RIGHTS RESERVED.

LOC	DIST	REVISIONS		
F	LNK	DESCRIPTION	DATE	BY
CM	52			
	AH1	REVISED PER ECO-11-004917	11MAR11	RK HMR

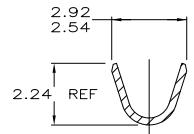
- △ 0.00038 MIN SELECTIVE GOLD PLATING ON INSIDE OF RECEPTACLE AND WIRE BARREL OVER NICKEL OVER ALL UNDERPLATE.
- △ 0.00076 MIN SELECTIVE GOLD PLATING ON INSIDE OF RECEPTACLE AND WIRE BARREL OVER NICKEL OVER ALL UNDERPLATE.
- 3. WIRE RANGE: 0.2 - 0.6 MM² (24 - 20 AWG)
- 4. INSULATION RANGE: 1.14 - 1.78
- △ REVERSED REELED.



SECTION A-A



SECTION B-B



SECTION C-C

△	0.25 BE CU	60598-9	
△	0.25 BE CU	60598-8	
△	0.25 PH BRZ	60598-7	
△	0.25 PH BRZ	60598-5	
△	MATTE TIN	0.25 BE CU	60598-4
△	PRE-TIN	0.25 PH BRZ	60598-3
△	MATTE TIN	0.25 BE CU	60598-2
△	PRE-TIN	0.25 PH BRZ	60598-1
△	FINISH	MATERIAL	PART NUMBER

MM	IN	MM	IN	MM	IN	MM	IN
1.14	.045	1.91	.075	2.79	.110	-	-
1.02	.040	1.78	.070	2.54	.100	9.65	.380
0.25	.010	1.486	.0585	2.41	.095	6.55	.258
0.13	.005	1.47	.058	2.24	.088	6.40	.252
0.00076	0.00030	1.40	.055	2.16	.085	3.94	.155
0.00038	0.00015	1.359	.0535	1.93	.076	2.92	.115

CONVERSION TABLE

METRIC

THIS DRAWING IS A CONTROLLED DOCUMENT.

DESIGNED BY	T. BECK	DATE	5-08-97
CHECKED BY	SWING	DATE	5-08-97
APPROVED BY	B. BIDDICK	DATE	8-22-97
PRODUCT SPEC	108-1025	APPLICATION SPEC	114-1008
WEIGHT	-	SIZE	A2
MATERIAL	SEE TABLE	ONE CODE	00779
FINISH	SEE TABLE	DRAWING NO.	60598
CUSTOMER DRAWING		SCALE	10:1
		SHEET	1 of 1
		REV	AH1

TE Connectivity
RECEPTACLE, .058 DIAMETER, 24-20 AWG, .045-.070 INSULATION, P.C. CONTACT