

4

3

2

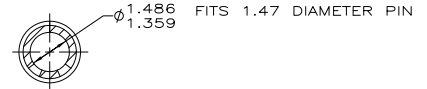
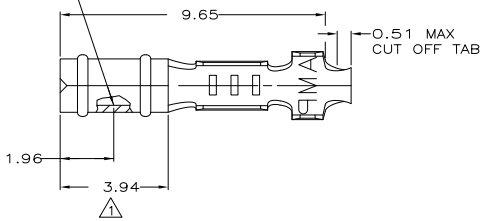
1

THIS DRAWING IS UNPUBLISHED. RELEASED FOR PUBLICATION. ALL RIGHTS RESERVED.

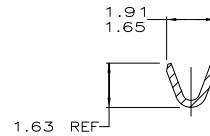
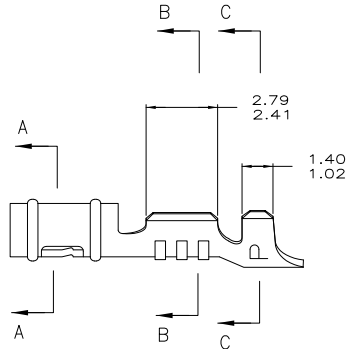
LOC	DIST	REVISIONS		
F	LNK	DESCRIPTION	DATE	BY
CM	52	Z1	REVISED PER ECO-11-004917	11MAR11 RIK HMR

- △ 0.00076 MIN SELECTIVE GOLD PLATING ON INSIDE OF RECEPTACLE OVER NICKEL OVER ALL UNDERPLATE.
- 2. WIRE RANGE: 0.12 - 0.4 MM<sup>2</sup> (26 - 22 AWG)
- 3. INSULATION RANGE: 0.89 - 1.65

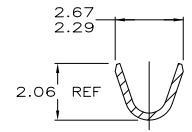
POINT OF MEASUREMENT  
△ 90° FROM SEAM



SECTION A-A



SECTION B-B



SECTION C-C

MATTE TIN	0.25 BE COPPER	60983-4
△ PRE-TIN	0.25 BE COPPER	60983-3
△ FINISH	0.25 PH BRZ	60983-2
	0.25 PH BRZ	60983-1
	MATERIAL	PART NUMBER

1.02	.040	1.65	.065	2.67	.105	-	-
0.89	.035	1.63	.064	2.41	.095	-	-
0.51	.020	1.486	.0585	2.29	.090	-	-
0.25	.010	1.47	.058	2.06	.081	9.65	.380
0.13	.005	1.40	.055	1.96	.077	3.94	.155
0.00076	0.00030	1.359	.0535	1.91	.075	2.79	.110
MM	IN	MM	IN	MM	IN	MM	IN

CONVERSION TABLE

METRIC

THIS DRAWING IS A CONTROLLED DOCUMENT.

DIMENSIONS:	mm	DATE	6-11-97
TOLERANCES UNLESS OTHERWISE SPECIFIED:		DATE	6-11-97
0 PLG	± .01	DATE	6-17-97
1 PLG	± .01	NAME	T. BECK
2 PLG	± .015	PRODUCT SPEC	108-1025
3 PLG	± .01	APPLICATION SPEC	114-1008
4 PLG	± .01	SIZE	A2
ANGLES	± .01	ONE CODE (DRAWING NO)	00779
FINISH		C	60983

TE Connectivity

RECEPTACLE, .058 DIAMETER, 26-22 AWG, .035-.065 INSULATION, LOOSE PIECE, P.C. CONTACT

CUSTOMER DRAWING SCALE: 10:1 SHEET 1 of 1 REV Z1