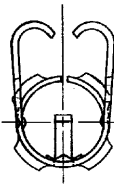
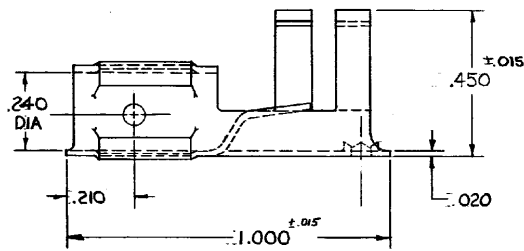


© 1965 BY AMP INCORPORATED. ALL RIGHTS RESERVED. AMP PRODUCTS COVERED BY PATENTS AND/OR PATENTS PENDING.

AMP 3348-1
UNPUBLISHED COPY NOT TO BE REPRODUCED NOR PUBLISHED WITHOUT WRITTEN PERMISSION OF AMP INCORPORATED.

ZONE	LTH	REVISIONS		DATE	APPROVED
		DESCRIPTION			
A		240 DIA WAS 200 DIA	F-4481		
B		CH'GD MATERIAL & FINISH		3/18/65	RCW
B		REV PER ECN P-5194		4/22/65	RCW
C		CH'GD MATL SPEC	PC-5514	FV 7-20-67	RCW



NOTE:
1. TIN PL (MIL-T-10727) TYPE I

UNLESS OTHERWISE SPECIFIED DIM. ARE IN INCHES. TOLERANCES ON: DECIMALS ± .003 ANGLES ± .5°		CONTRACT NO. 11-9-65		AMP INCORPORATED HARRISBURG, PENNSYLVANIA	
MATERIAL CARBON STEEL AISI TYPE 1008 OR 1010		NAME IGNITION SYSTEM TERMINAL		SIZE B 00779	
LDC PRINT DIST GAC		APPROVED 11/11/65		NUMBER 332416	
FINISH NOTE 1		OTHER APPD		SCALE 4-1	
				SHEET 1 OF 1	