

4

3

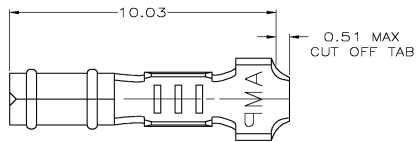
2

1

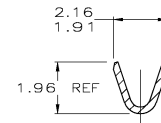
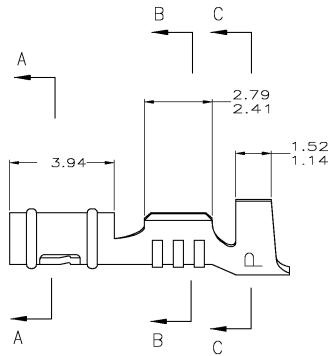
THIS DRAWING IS UNPUBLISHED. RELEASED FOR PUBLICATION
 © COPYRIGHT BY TYCO ELECTRONICS CORPORATION. ALL RIGHTS RESERVED.

LOC	DIST	REVISIONS			
P	LTR	DESCRIPTION	DATE	MM	APPD
CM	00				
	R1	REVISED PER 0638-0209-04	04-MAR-04	KW	JE

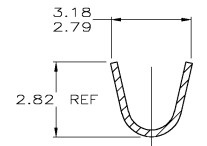
- 1. WIRE RANGE: 0.2 - 0.6 MM² (24 - 20 AWG)
- 2. INSULATION RANGE: 1.52 - 2.29



SECTION A-A



SECTION B-B



SECTION C-C

PRE-TIN	0.25 PH BRZ	60986-1
FINISH	MATERIAL	PART NUMBER

1.359	.0535	1.96	.077	2.82	.111	-	-
1.14	.045	1.91	.075	2.79	.110	-	-
0.51	.020	1.52	.060	2.41	.095	10.03	.395
0.25	.010	1.486	.0585	2.29	.090	3.94	.155
0.13	.005	1.47	.058	2.16	.085	3.18	.125
MM	IN	MM	IN	MM	IN	MM	IN

CONVERSION TABLE

METRIC

THIS DRAWING IS A CONTROLLED DOCUMENT.

DRG	K. WHITAKER	04-MAR-04	 Tyco Electronics Corporation Harrisburg, Pa 17105-3608
CHK	J. ELLIS	04-MAR-04	
APPD	WMC	04-MAR-04	

J. ELLIS
 PRODUCT SPEC: 108-1025
 APPLICATION SPEC: 114-1008
 WEIGHT: -
 FINISH: -

SEE CASE CODE (DRAWING NO): A2 00779
 CUSTOMER DRAWING
 SCALE: 10:1 SHEET 1 OF 1 REV R1

RECEPTACLE, .058 DIAMETER,
 24-20 AWG, .060-.090 INSULATION,
 LOOSE PIECE, P.C. CONTACT

RESTRICTED TO