

DRAWING MADE IN AMERICAN PROJECTION

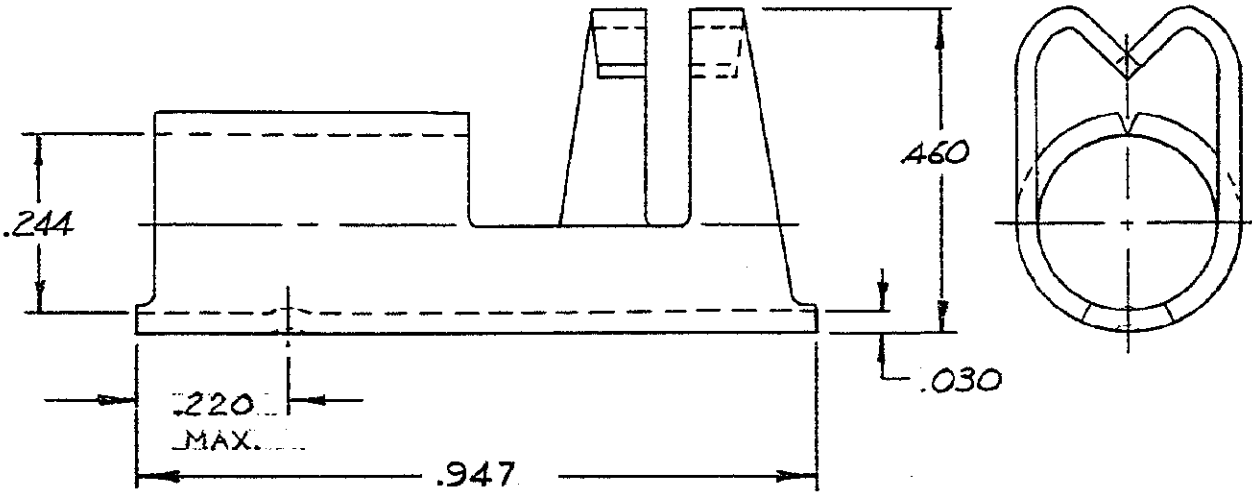
LOC **G** PRINT DIST **14 (B)**

© 1947 BY AMP INCORPORATED. ALL RIGHTS RESERVED. AMP PRODUCTS COVERED BY PATENTS AND/OR PATENTS PENDING.

REVISIONS

LTR	DESCRIPTION	DATE	APPROVED
A	REDRAWN W/O CHANGE	SB 2-16-73	<i>AME</i>
B	REV PER G-1255	UTA 6-5-85	<i>Pjm</i>
C	REV / 0720-0091-93	LO 6/93	<i>ME</i>

34482



8-34482-1	LOOSE PC. BOX	100
34482	LOOSE PC	-
PART NO	PACKAGE TYPE	QTY

UNLESS OTHERWISE SPECIFIED DIMENSIONS ARE IN INCHES
 TOLERANCES ON:
 DECIMALS ±.008
 ANGLES ±5°

MATERIAL
BRASS
 (MIL-C-50)

CONTRACT NO.	<i>11</i>
DR.	<i>Harry Bach 2-15-73</i>
CHK	<i>An Ensminger 2-15-73</i>
APPD	<i>Abel 2-16-73</i>
REL	<i>Harry Bach 2-16-73</i>
DSGN APPD	
OTHER APPD	



AMP INCORPORATED
 HARRISBURG, PENNSYLVANIA

NAME
**WIRE TERMINAL
 SPARK PLUG - STRAIGHT-ON
 WIRE SIZE: 7 MM**

SIZE	CODE IDENT NO.	NUMBER
A	00779	34482

SCALE 4:1 SHEET 1 OF 1