

4

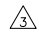
3

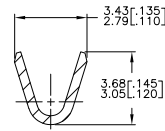
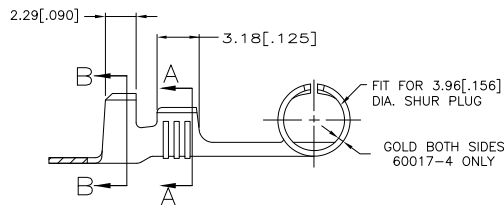
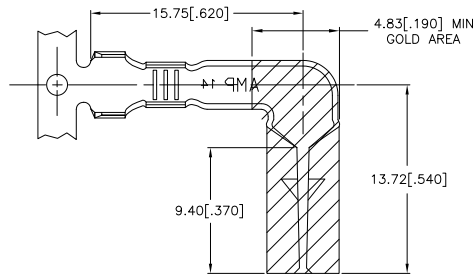
2

1

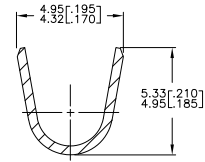
THIS DRAWING IS UNPUBLISHED. RELEASED FOR PUBLICATION
 © COPYRIGHT BY TYCO ELECTRONICS CORPORATION. ALL RIGHTS RESERVED.

LOC	DIST	REVISIONS		
F	LWR	DESCRIPTION	DATE	BY
AF	50	L1	REVISED PER ECR-07-007802	15MAY07 HMR DD

- 1 CONTINUOUS STRIP ON REELS
- 2 DIMS IN BRACKETS ARE IN INCHES
-  PRELIMINARY - NOT FOR PRODUCTION



SECTION A-A
SCALE 8:1



SECTION B-B
SCALE 8:1

OBSOLETE	2.54-3.56 [0.100-0.140]	0.5-1.4mm² [20-16]	GOLD OVER NICKEL	60017-4
	2.54-3.56 [0.100-0.140]	0.5-1.4mm² [20-16]	NONE	60017-3
	2.54-3.56 [0.100-0.140]	0.5-1.4mm² [20-16]	TIN	60017-2
OBSOLETE	2.54-3.56 [0.100-0.140]	0.5-1.4mm² [20-16]	NONE	60017-1

REMARKS	INSULATION RANGE	WIRE RANGE	FINISH	PART NO
THIS DRAWING IS A CONTROLLED DOCUMENT.				
DIMENSIONS: mm		DIM R FLAG 28MAY03 CHK D DECKER 28MAY03 D DECKER 28MAY03 APPO NAME PRODUCT SPEC APPLICATION SPEC WEIGHT FINISH		
TOLERANCES UNLESS OTHERWISE SPECIFIED: 0 PLG ± 1 PLG ± 2 PLG ± 3 PLG ± 0.38[0.15] 4 PLG ± ANGLES ±		Tyco Electronics Corporation Harrisburg, Pa 17105-3608 SHUR PLUG RECEPTACLE (RIGHT ANGLE) SIZE CASE CODE DRAWING NO A2 00779 C=60017 CUSTOMER DRAWING SCALE 5:1 SHEET 1 OF 1 REV L1		
MATERIAL 0.41[0.016]THK BRASS		RESTRICTED TO		

60017

A