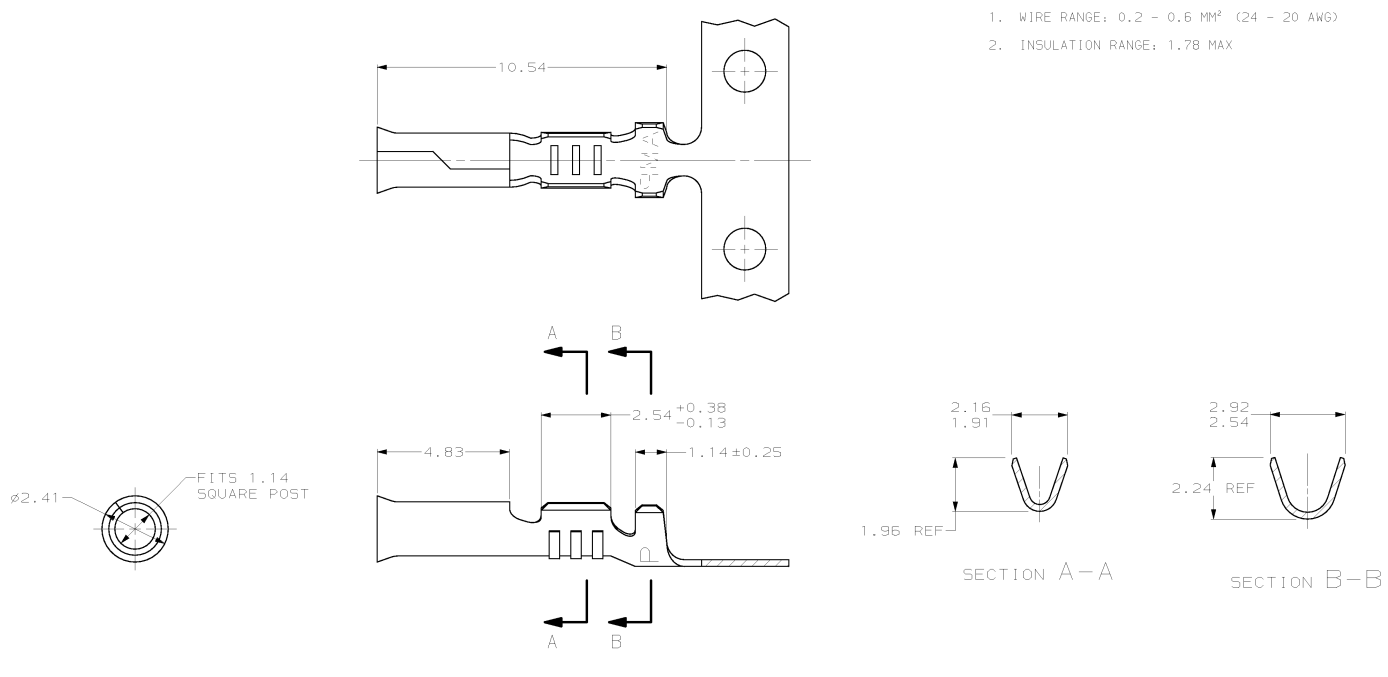


REV	DATE	DESCRIPTION	DATE	BY	APP'D
CM	52				
J		REV PER EC-0130-0273-97	12-11-97	JH	RS

1. WIRE RANGE: 0.2 - 0.6 MM<sup>2</sup> (24 - 20 AWG)
2. INSULATION RANGE: 1.78 MAX



INSULATION	WIDTH	STRIP LENGTH	TYPE	WIDTH	HEIGHT	WIRE
0	2.03	4.06	F	1.40	1.02	0.5 MM <sup>2</sup> (20 AWG)
					0.94	0.3 MM <sup>2</sup> (22 AWG)
					0.84	0.2 MM <sup>2</sup> (24 AWG)

61622-1  
PART NUMBER

MM	IN	MM	IN	MM	IN	MM	IN
0.84	.033	1.91	.075	2.54	.100	-	-
0.38	.015	1.78	.070	2.41	.095	-	-
0.25	.010	1.40	.055	2.24	.088	10.54	.415
0.13	.005	1.14	.045	2.16	.085	4.83	.190
0.05	.002	1.02	.040	2.03	.080	4.06	.160
0.0035	.00014	0.94	.037	1.96	.077	2.92	.115

CONVERSION TABLE

**METRIC**

THIS DRAWING IS A CONTROLLED DOCUMENT		DWG. T. BECK 6-30-95 CHK. SWING 6-30-95 DESIGNED BY: BEND/CK 6-22-95 MODEL SPEC: 108-1025 APPLICATION SPEC: 114-1008 REVISION: - MATERIAL: 0.25 BRASS FINISH: 0.0035 MAX PRE-TIN	<b>AMP</b> AMP Incorporated Harrisburg, PA 17105-3608 POST RECEPTACLE, .045 SQUARE, 24-20 AWG, .070 MAX INSULATION, P.C. CONTACT FILE: 108-1008 DRAWING NO: A200779 61622
CUSTOMER DRAWING		SCALE: 10:1	SHEET: 1 OF 1