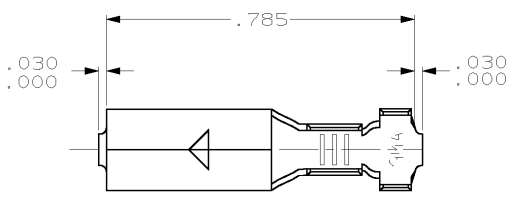
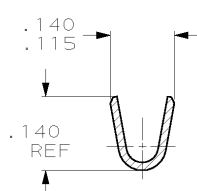
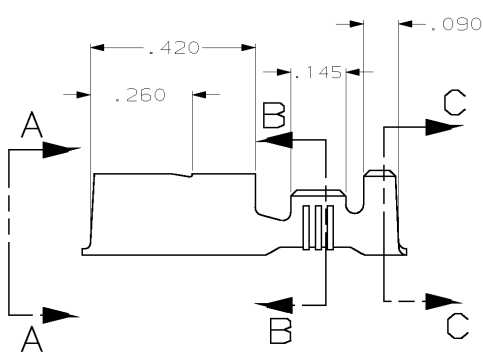
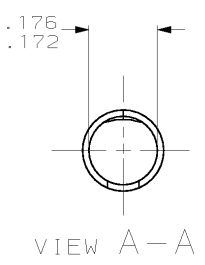


THIS DRAWING IS UNPUBLISHED. RELEASED FOR PUBLICATION .19 . . .
 © COPYRIGHT 19 BY AMP INCORPORATED. ALL RIGHTS RESERVED.

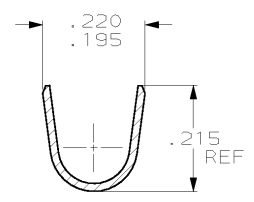
REVISONS		DATE	DWN	APVD
P	LTR	DESCRIPTION		
C		REDRAWN PER 0G1A-0144-99	29JUN99	JR DD



- 1 CONTINUOUS STRIP ON REELS
- 2 WIRE SIZE #18-#14 AWG.
- 3 INSULATION RANGE IS .120-.175 DIA.
- 4 PIN DIA .180±.001.



SECTION B-B
SCALE 5:1



SECTION C-C
SCALE 5:1

.000080 MIN TIN	61412-2
-	61412-1
FINISH	PART NO.

THIS DRAWING IS A CONTROLLED DOCUMENT.		DWN	JR RUTH	29JUN99
DIMENSIONS:		CHK	MS FEHER	29JUN99
INCHES		APVD	D DECKER	29JUN99
TOLERANCES UNLESS OTHERWISE SPECIFIED:		PRODUCT SPEC	-	
0 PLC	±-	APPLICATION SPEC	-	
1 PLC	±-	WEIGHT	-	
2 PLC	±-	CUSTOMER DRAWING	-	
3 PLC	±.015	SCALE	4:1	
4 PLC	±-	SHEET	1 OF 1	
ANGLES	±-	REV	C	
MATERIAL	4M BRASS	FINISH	SEE TABLE	

AMP AMP Incorporated Harrisburg, PA 17105-3608	
RECEPTACLE, SHUR PLUG, .180 DIA	
SIZE	A300779
CAGE CODE	C-61412
DRAWING NO	61412-2
RESTRICTED TO	-