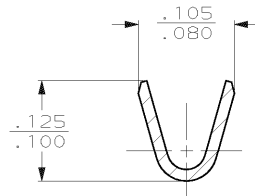
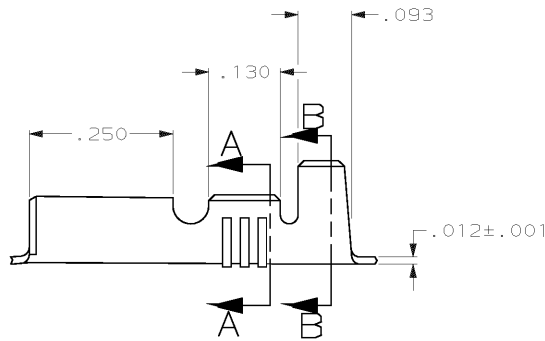
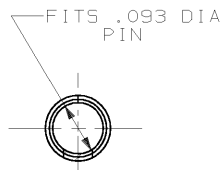
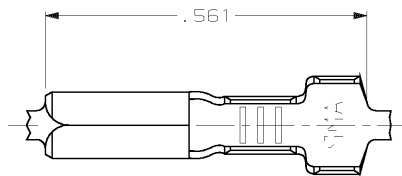


DRAWING MADE IN THIRD ANGLE PROJECTION

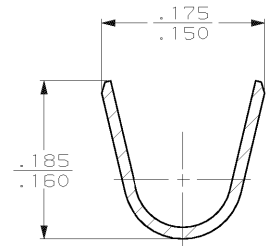
THIS DRAWING IS UNPUBLISHED. RELEASED FOR PUBLICATION, 19
 © COPYRIGHT 19 BY AMP INCORPORATED. ALL INTERNATIONAL RIGHTS RESERVED.

LOC	DIST	REVISIONS				
P	F	ZONE	LTR	DESCRIPTION	DATE	APPD
AF	50		AA	ADDED -1 PER 063A-0814-00	20DEC00	MF-DD

- 1 CONTINUOUS STRIP ON REELS
- ② .000080 MIN TIN PLATE.
- ③ .000200 MIN SILVER PLATE OVER
.000050 MIN NICKEL UNDERPLATE.



SECTION A-A
SCALE 10:1



SECTION B-B
SCALE 10:1

③	.090-.130 DIA	22-18 AWG	41854-1
②	.090-.130 DIA	22-18 AWG	41854
FINISH	INSULATION RANGE	WIRE RANGE	PART NO
DO NOT SCALE PRINT. UNLESS SPECIFIED DIMENSIONS IN INCHES TOLERANCES ON: 2. PLC DEC ± 3. PLC DEC ± .015 ANGLES ± -	DR 4/10/90 P FORNEY CHK 4/10/90 JR RUTH APPD 4/10/90 G YETTER APPD 4/10/90 R KUZO	AMP Incorporated Harrisburg, PA 17105-3608	
MATERIAL H04 BRASS	PRODUCT SPEC -	NAME PIN RECEPTACLE, .093 DIA	
FINISH SEE TABLE	APPLICATION SPEC -	SIZE B	CAGE CODE 00779
	WEIGHT -	SCALE 6:1	DRAWING NO 41854
			SHEET 1 OF 1

AMP 1470-15 REV 11-89
 20-DEC-00 11:50:41 amp02644 /r/amp02644/edmod

CUSTOMER DRAWING