

4

3

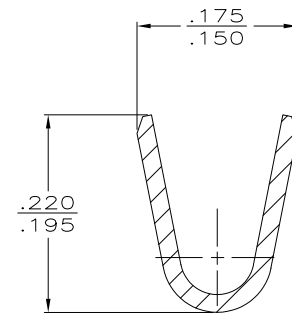
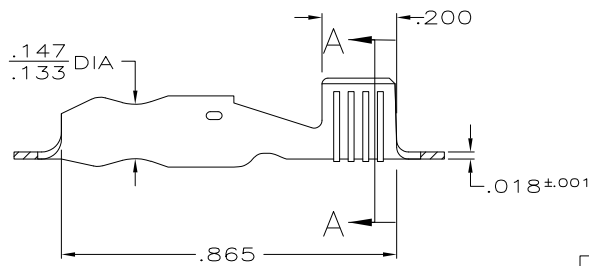
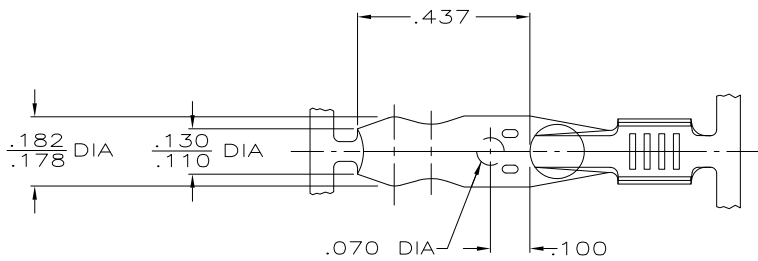
2

1

THIS DRAWING IS UNPUBLISHED. RELEASED FOR PUBLICATION  
 © COPYRIGHT - BY TYCO ELECTRONICS CORPORATION. ALL INTERNATIONAL RIGHTS RESERVED.

LOC	DIST	REVISIONS			
P	LTR	DESCRIPTION	DATE	DWN	APVD
AF	50	L1	REVISED PER ECR-08-032291	22DEC08	HMR DD

- 1 REVERSE REELED 42865-3 ONLY
- ② .000080 MIN TIN PLATE PER ASTM-B545 OVER  
.000050 MIN NICKEL UNDERPLATE PER QQ-N-290.
- 3 WIRE SIZE IS #14-#10 AWG, 9600 CMA MAX.



SECTION A-A  
SCALE 10:1

OBSOLETE

②	1/4 HARD BRASS	42865-5
TIN PL	1/4 HARD BRASS	42865-3
.000080 MIN THK	1/4 HARD BRASS	42865-2
ASTM-B545	1/4 HARD BRASS	42865-1
NONE	1/4 HARD BRASS	42865-1

THIS DRAWING IS A CONTROLLED DOCUMENT.		DWN		3/27/89		Tyco Electronics Corporation	
DIMENSIONS:		CHK		3/27/89		Harrisburg, PA 17105-3608	
INCHES		PM FORTNEY		3/27/89		NAME	
TOLERANCES UNLESS OTHERWISE SPECIFIED:		APVD		3/27/89		G YETTER	
0 PLC ± -		PRODUCT SPEC		-		SHUR PLUG, .180 DIA	
1 PLC ± -		APPLICATION SPEC		-		SIZE	
2 PLC ± -		WEIGHT		-		CAGE CODE	
3 PLC ± .015		CUSTOMER DRAWING		A3		DRAWING NO	
4 PLC ± -		SCALE		4:1		RESTRICTED TO	
ANGLES ± -		SHEET		1 of 1		REV	
MATERIAL		FINISH		L1		-	
SEE TABLE		SEE TABLE		-		-	