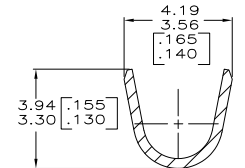
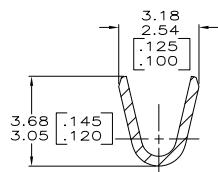
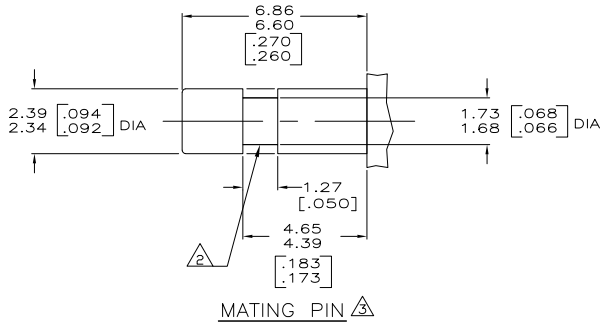
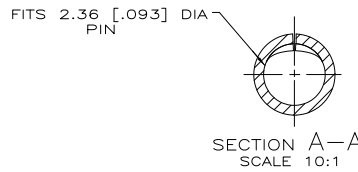
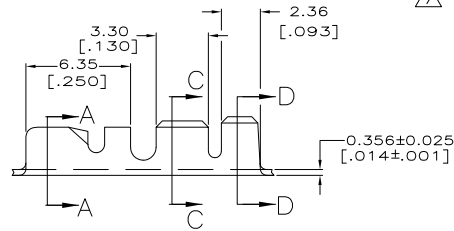
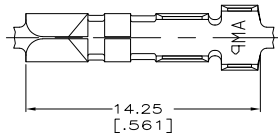


THIS DRAWING IS UNPUBLISHED. RELEASED FOR PUBLICATION
 © COPYRIGHT BY TYCO ELECTRONICS CORPORATION. ALL RIGHTS RESERVED.

LOC		DIBT		REVISIONS		
P	LR	DESCRIPTION	DATE	BY	APPD	
J		REVISED PER ECR-07-017666	30JUL07	MF	DD	

- 1 CONTINUOUS STRIP ON REELS.
 - 2 INDENT IS OPTIONAL ON PIN.
 - 3 MATING PIN IS TIN PLATED.
 - 4 METHOD OF FASTENING PIN TO BE DETERMINED BY CUSTOMER.
 - 5 WIRE RANGE: 0.8-1.3mm² [#18-#16] AWG.
 - 6 INSULATION RANGE: 2.29-3.05mm [.090-.120] DIA.
- △ PRELIMINARY - NOT FOR PRODUCTION.



	0.00381 [0.00150] MIN NICKEL PLATE	H04 BRASS	42101-4
OBSOLETE	0.002032 [0.00080] MIN TIN PLATE	H04 PHOSPHOR BRONZE	42101-3
	0.002032 [0.00080] MIN TIN PLATE	H04 BRASS	42101-2
OBSOLETE		H04 BRASS	42101-1

FINISH		MATERIAL		PART NUMBER	
THIS DRAWING IS A CONTROLLED DOCUMENT.					
DIMENSIONS:		DRAWN		DATE	
INCHES		M.S. FEHER		30JUL2008	
OTHER DIMENSIONS:		CHK		30JUL2007	
D.P. DECKER		APPD		30JUL2007	
D.F. DECKER		NAME		Tyco Electronics Corporation	
PRODUCT SPEC		APPLICATION SPEC		Harrisburg, PA 17105-3608	
MATERIAL		WEIGHT		SIZE	
SEE TABLE		-		A2 00779 C=42101	
FINISH		SEE TABLE		CUSTOMER DRAWING	
				SCALE 5:1 SHEET 1 of 1 REV J	