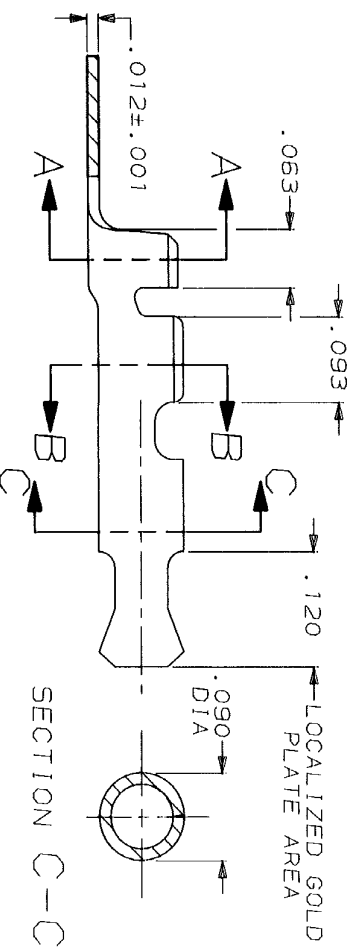
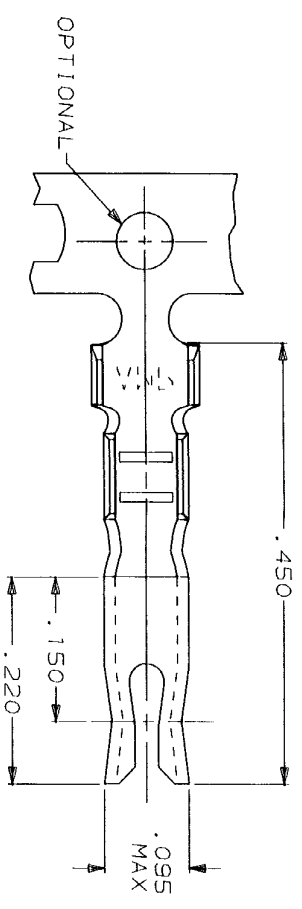
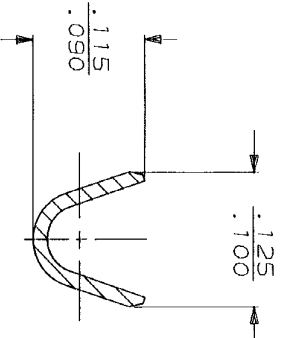


DRAWING MADE IN THIRD ANGLE PROJECTION
 THIS DRAWING IS UNPUBLISHED. RELEASED FOR PUBLICATION
 © COPYRIGHT 19 BY AMP INCORPORATED. ALL INTERNATIONAL RIGHTS RESERVED.

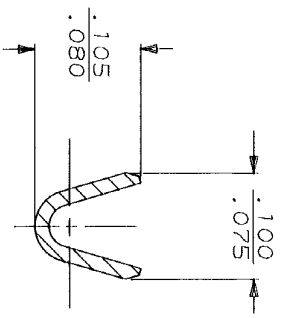
LOC	DIST	ZONE	LTR	REVISIONS	DATE	APPD
AF	50			REV AND REDRAWN PER AF-7225	2/4/91	PF/JR



SECTION A-A
SCALE 10:1



SECTION B-B
SCALE 10:1



- 1 CONTINUOUS STRIP ON REELS.
- 2 .000030 MIN GOLD PER MIL-G-45204 IN LOCALIZED GOLD PL AREA, GOLD FLASH ON REMAINDER OVER .000050 MIN NICKEL PER QQ-N-290.
- 3 .000080 MIN TIN PL PER MIL-T-107227.

FINISH		INSULATION RANGE		WIRE RANGE		PART NO	
3	2	.048-.071	24-20 AWG	AMP	AMP Incorporated	60885-2	60885-1
DO NOT SCALE PRINT. DIMENSIONS IN INCHES TOLERANCES ON: .015		DR 2/2/81	CHK 2/4/81	APPD 2/4/91	NAME RECEPACLE, PIN, .055 DIA	AMP Incorporated Harrisburg, PA 17105-3608	
MATERIAL #4 HARD PHOS BRONZE		APPD 2/4/91	APPD 2/4/91	PRODUCT SPEC	REVISIONS		
FINISH SEE TABLE		APPLICATION SPEC		WEIGHT -	SIZE B	CAGE CODE 00779	DRAWING NO 60885
					SCALE 8:1	SHEET 1 OF 1	

CUSTOMER DRAWING

AMP 1270-15 REV 11-88
 04 FEB 1991 31:14.25
 AMP17795-66788489121220002204 P11-4021