

4

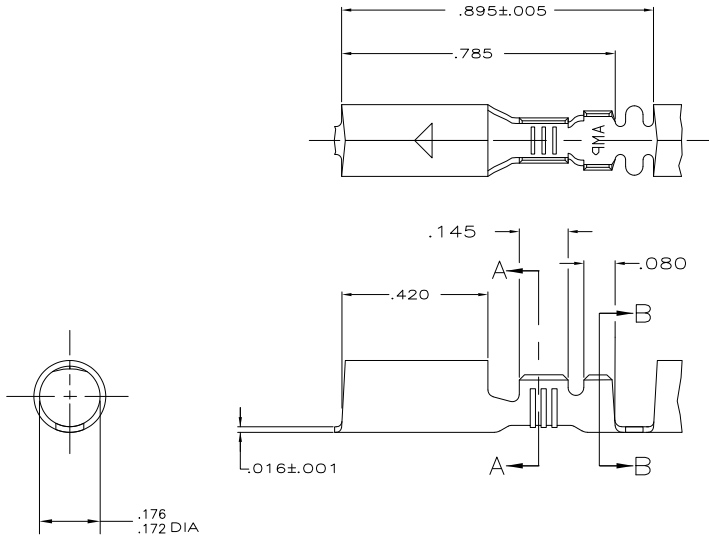
3

2

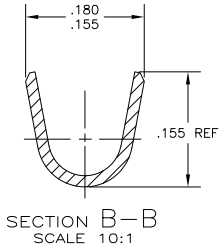
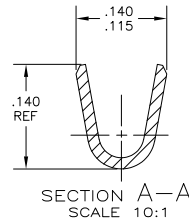
1

THIS DRAWING IS UNPUBLISHED. RELEASED FOR PUBLICATION  
 © COPYRIGHT - By - ALL RIGHTS RESERVED.

LOC	DIST	REVISIONS		
P	LTR	DESCRIPTION	DATE	BY
AF	50	S2	REVISED PER ECO-11-004917	11MAR11
				RK HMR



- 1 CONTINUOUS STRIP ON REELS
- 2 TIN PL .000080 MIN PER MIL-T-10727
- 3 .000080 MIN TIN PLATE PER MIL-T-10727 OVER .000050 MIN NICKEL UNDERPLATE PER QQ-N-290.
- 4 .000030 MIN GOLD PLATE OVER .000050 MIN NICKEL UNDERPLATE PER QQ-N-290.
- 5 .000200 MIN SILVER OVER .000050 MIN NICKEL UNDERPLATE PER QQ-N-290
- 6 WIRE SIZE IS #18-#14 AWG
- 7 INSULATION RANGE IS .090-.125 DIA
- 8 PREPRODUCTION - FASR REQ
- 9 PRELIMINARY - NOT FOR PRODUCTION
- 10 OBSOLETE PARTS: OBSOLETE CIS STREAMLINING PER D.RENAUD/D.SINISI



TYPE	WIDTH	STRIP LENGTH	TYPE	WIDTH	HEIGHT	WIRE
F OR O	.140	.210	F	.100	.077	14
					.067	16
					.061	18
					±.002	
					±.015	
TYPE	WIDTH	STRIP LENGTH	TYPE	WIDTH	HEIGHT	WIRE
INSUL BARREL CRIMP			WIRE BARREL CRIMP			

10	OBSOLETE	5	9	60798-8
		4	8	60798-7
		3		60798-6
		2		60798-4
		-		60798-2
			FINISH	PART NO.

DIMENSIONS:		DATE		TE Connectivity	
INCHES		12/13/08		RECEPTACLE, SHUR PLUG, .180 DIA	
OTHER DIMENSIONS:		12/13/08		SIZE CASE CODE DRAWING NO	
OTHER DIMENSIONS:		6/14/99		A2 00779 C-60798	
OTHER DIMENSIONS:		6/14/99		RESTRICTED TO	
OTHER DIMENSIONS:				SCALE 5:1 SHEET 1 of 1 REV S2	
OTHER DIMENSIONS:				CUSTOMER DRAWING	