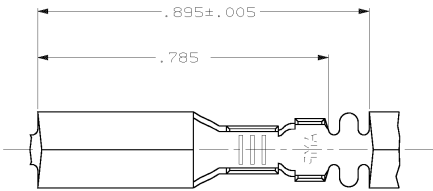
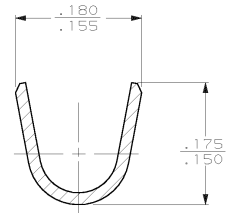
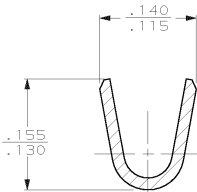
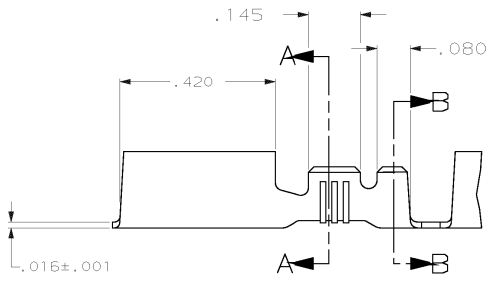
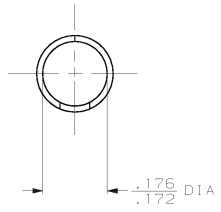


DRAWING MADE IN THIRD ANGLE PROJECTION
 THIS DRAWING IS UNPUBLISHED. RELEASED FOR PUBLICATION
 © COPYRIGHT 19 BY AMP INCORPORATED. ALL INTERNATIONAL RIGHTS RESERVED.

LOC	DIST	P	F	ZONE	LTR	REVISIONS	DATE	APPD
AF	50					5 REV PER 063A-0403-01	28JUN81	JR/DD



- 1 CONTINUOUS STRIP ON REELS
- △ PRE-PLATE .000100 MIN TIN OVER
.000050 MIN NICKEL, POST PLATE
.000080 MIN TIN PER MIL-T-10727
- △ .000080 MIN TIN PL PER MIL-T-10727.
- △ WITH INTERLEAVING PAPER.
- △ PRELIMINARY - NOT FOR PRODUCTION.



SECTION A-A
SCALE 10:1

SECTION B-B
SCALE 10:1

MATERIAL	FINISH	INSULATION DIA	WIRE RANGE	PART NO
4M BRASS	△			△ 60799-6
4M BRASS	△			60799-5
PHOS BRONZE	△	.090-.125	18-14	60799-4
4M BRASS				60799-2

DO NOT SCALE PRINT. UNLESS SPECIFIED DIMENSIONS IN INCHES TOLERANCES ON : 2 PLC DEC ± .015 3 PLC DEC ± .015 ANGLES ± 1°		DR 12/13/88 P FORTNEY	AMP AMP INCORPORATED Harrisburg, Pa. 17105
MATERIAL		CHK 6/14/89 MS FEHER	
SEE TABLE		APPD 6/14/89 G YETTER	
FINISH		APPD 6/14/89 R KUZO	NAME
SEE TABLE		PRODUCT SPEC	RECEPTACLE, SHUR PLUG, .180 DIA
		APPLICATION SPEC	SIZE C FSCM NO 00779 DRAWING NO 60799
		WEIGHT	SCALE 5:1 SHEET 1 OF 1

F OR O	WIDTH	STRIP LENGTH ±.015	TYPE	WIDTH	±.002 HEIGHT	WIRE
	.140	.210	F	.100	.077	14
					.067	16
					.061	18