

4

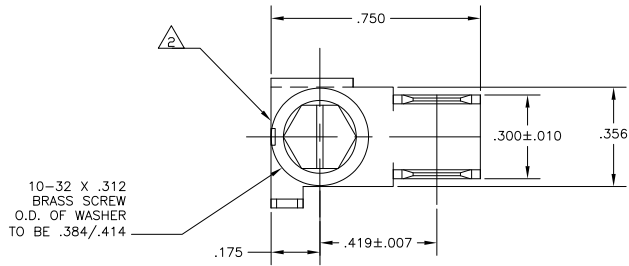
3

2

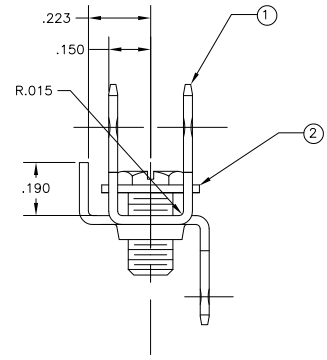
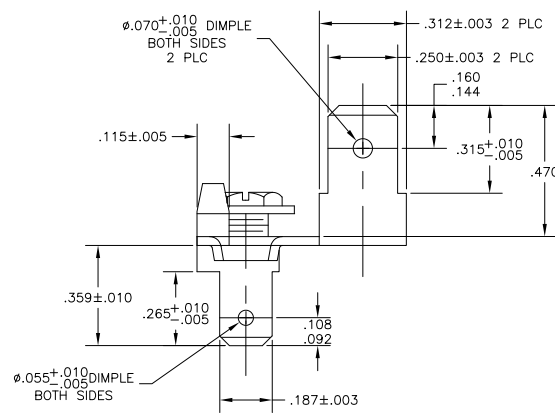
1

THIS DRAWING IS UNPUBLISHED. RELEASED FOR PUBLICATION  
 © COPYRIGHT BY TYCO ELECTRONICS CORPORATION. ALL RIGHTS RESERVED.

LOC		DIBT		REVISIONS			
P	LR	DESCRIPTION	DATE	BY	APPD		
A1		REL PER ECR 07-014045	14JUN07	JR	JK		



10-32 X .312  
BRASS SCREW  
O.D. OF WASHER  
TO BE .384/.414



- 1 MATERIAL: .032±.001 THK BRASS, 100-86, HEAT TREAT 0.082
- 2 .010 MAX CUT-OFF ALLOWED
- 3 ASSEMBLY SCREW AND TORQUE 2-8 LB-IN
- 4 THREADS DEFORMED SO AS NOT TO ALLOW REMOVAL OF THE SCREW.
- 5 PART TO BE CLEAN AND OIL FREE
- 6 MATERIAL: HEX HEAD WASHER .394 DIA, #10-32 .312 LONG BRASS SCREW < ELECTRICAL TYPE >
- 7 MATERIAL: HEX HEAD WASHER .394 DIA, #10-32 .312 LONG BRASS SCREW < ELECTRICAL TYPE > BRIGHT NICKEL FINISH

1	1	T20737542	FASTON TAB ASSEMBLY NICKEL PLATED BRASS SCREW	521948-2
-	1	T20737542	FASTON TAB ASSEMBLY BRASS SCREW	521948-1
SCREW 1742447-2	SCREW 1742447-1	FASTON TAB 1742446-1	EMERSON P/N	DESCRIPTION PART NO.

THIS DRAWING IS A CONTROLLED DOCUMENT.

DESIGNER: JR. RUTH	DATE: 10/11/06	BY: Tyco Electronics	TYCO ELECTRONICS CORPORATION
CHECKER: K. RANDOLPH	DATE: 10/11/06	Harrisburg, Pa 17105-3608	
APPROVER: K. RANDOLPH	DATE: 10/11/06	ASSEMBLY, TAB, FASTON, .250 AND 187 SERIES	
APPLICATION SPEC: -	SIZE: A2	CAGE CODE: 00779	DRAWING NO: 521948
WEIGHT: -	CUSTOMER DRAWING		RESTRICTED TO: -
MATERIAL: -	SCALE: 4:1		SHEET: 1 OF 1 REV: A1

AMP 1471-9 REV 31MM2000

521948