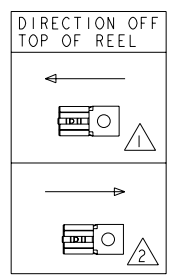
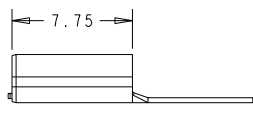
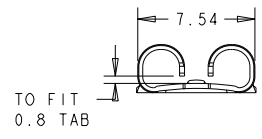
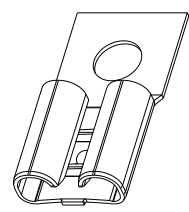
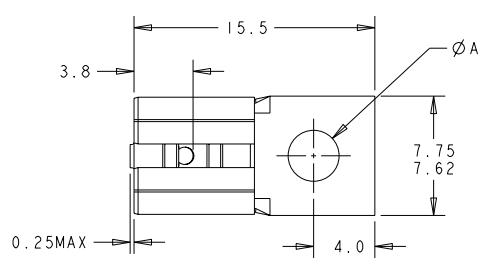


THIS DRAWING IS UNPUBLISHED. RELEASED FOR PUBLICATION
 COPYRIGHT 20 BY TYCO ELECTRONICS CORPORATION. ALL RIGHTS RESERVED.

LOC	DIST	REVISIONS			
P	LTR	DESCRIPTION	DATE	DWN	APVD
F		ECR-09-005096	04/03/09	MJG	JA
F I		ECR-10-000003	22APR10	RK	SRE



OBSOLETE	2	2.41/2.49	PRE TIN	BRASS	1-151939-4
	2	2.41/2.49	NONE	BRASS	1-151939-3
	2	3.28	NONE	BRASS	1-151939-1
OBSOLETE	1	3.18	NONE	BRASS	1-151939-0
	1	2.41/2.49	PRE TIN	BRASS	1-151939-4
	1	2.41/2.49	NONE	BRASS	151939-3
	1	3.28	ELECTRO TIN	BRASS	151939-2
	1	3.28	NONE	BRASS	151939-1
	1	3.18	NONE	BRASS	151939
REELING	ØA DIM	FINISH	MATERIAL	PART NO	

THIS DRAWING IS A CONTROLLED DOCUMENT FOR TYCO ELECTRONICS CORPORATION
 IT IS SUBJECT TO CHANGE AND THE CONTROLLING ENGINEERING ORGANIZATION
 SHOULD BE CONTACTED FOR THE LATEST REVISION.

DIMENSIONS:	TOLERANCES UNLESS OTHERWISE SPECIFIED:
mm	
0 PLC	±0.4
1 PLC	±0.4
2 PLC	±0.4
3 PLC	±0.4
4 PLC	±0.4
ANGLES	±0.4
MATERIAL	FINISH - ±0.5

OWN	M. GREENER	04MAR2009	Tyco Electronics UK Ltd.	
CHK	J. AMBROSE	04MAR2009	Bideford, North Devon, EX39 4HE	
APVD	J. AMBROSE	04MAR2009	NAME	
PRODUCT SPEC			FASTON TAB ADAPTOR	
APPLICATION SPEC			-	
WEIGHT			SIZE	CAGE CODE
-			A3	00779
CUSTOMER DRAWING			DRAWING NO	RESTRICTED TO
-			C-151939	-
SCALE			4:	SHEET
-			1	OF
-			1	REV
-			F	I