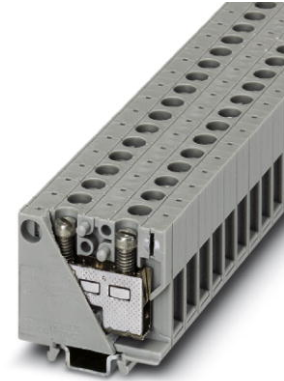


MBK 10

Order No.: 1402018



<http://eshop.phoenixcontact.de/phoenix/treeViewClick.do?UID=1402018>

Feed-through modular terminal block, Type of connection: Screw connection, Width: 7.5 mm, Color: gray, Mounting type: NS 15

Commercial data	
EAN	4017918020750
Pack	50 pcs.
Customs tariff	85369010
Weight/Piece	0.01424 KG

Product notes

WEEE/RoHS-compliant since: 01/01/2003

<http://www.download.phoenixcontact.com>
Please note that the data given here has been taken from the online catalog. For comprehensive information and data, please refer to the user documentation. The General Terms and Conditions of Use apply to Internet downloads.

Certificates / Approvals



Certification

BV, CSA, CUL, GOST, LR, NK, UL

CSA

Nominal voltage U_N	300 V
Nominal current I_N	55 A
AWG/kcmil	26-8

CUL

Nominal voltage U_N	600 V
Nominal current I_N	50 A
AWG/kcmil	26-8

UL

Nominal voltage U_N	600 V
Nominal current I_N	50 A
AWG/kcmil	26-8

Accessories

Item	Designation	Description
Assembly		
1413227	ATP-MBK	Partition plate, Length: 42.5 mm, Width: 2.5 mm, Height: 41 mm, Color: gray
1401637	E/MBK	End bracket, width: 6.2 mm, color: gray
1401682	NS 15 PERF 2000MM	DIN rail, material: steel, perforated, height 5.5 mm, width 15 mm, length: 2 m
1401695	NS 15 UNPERF 2000MM	DIN rail, material: Steel, unperforated, height 5.5 mm, width 15 mm, length: 2 m

Bridges

0801157	EB 2- BK 4	Insertion bridge, 2-pos., for strip terminal block, BK 4
0801144	EB 3- BK 4	Insertion bridge, 3-pos., for strip terminal block, BK 4
0801131	EB 10- BK 4	Insertion bridge, 10-pos., for strip terminal block, BK 4

Address

PHOENIX CONTACT Deutschland GmbH
Flachsmarktstr. 8
32825 Blomberg, Germany
Phone +49 5235 3 12000
Fax +49 5235 3 41200
<http://www.phoenixcontact.de>



© 2010 Phoenix Contact
Technical modifications reserved;