

PC TERMINAL BLOCKS

These versatile PC terminal blocks provide a quick and easy method to attach wire leads to a circuit board. Multiple units may

be interlocked for strips as long as 24 positions inline. Because of accumulating tolerances, we do not recommend longer strips.

- Wire access available in horizontal, 45° or vertical wire entry
- Simplifies termination of removable leads
- Individual leads can be disconnected without disturbing others
- Wire guard helps prevent damage to conductors
- Accepts 22-16 AWG wire
- Mounts easily in pre-drilled or stamped holes
- 5mm spacing

SPECIFICATIONS

MATERIAL:

Contact: Brass, Tin Plate
Housing: Blue PBT, UL Rated 94V-0
Screw: Steel, Zinc Plate & Clear Chromate (captivated)

ELECTRICAL:

Current Rating: 16 Amps
Dielectric Strength: 2500V
Insulation Breakdown: 1500VAC/min.
Rated Voltage: 250V

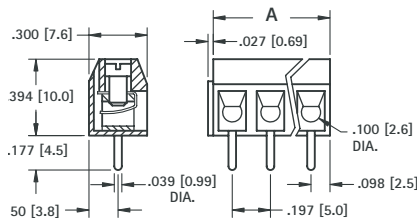
MECHANICAL:

Operating Temp: 22°F to 248°F (-30°C to 120°C)
Peak Temp: +393°F (+200°C)
Wire Size: Accepts #22-14 AWG

HORIZONTAL WIRE ENTRY

5mm SPACING

CAT. NO.	POSITIONS	A DIM.
8718	2	.394 (10.0)
8719	3	.591 (15.0)



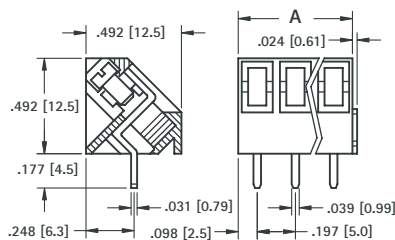
Recommended Mtg. Hole Size: .047 (1.19)



45° WIRE ENTRY

5mm SPACING

CAT. NO.	POSITIONS	A DIM.
8720	2	.394 (10.0)
8721	3	.591 (15.0)



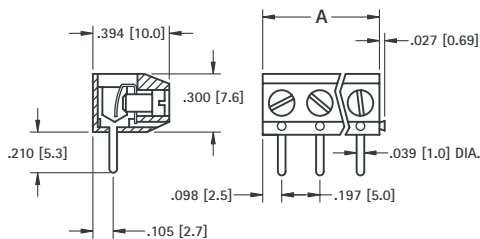
Recommended Mtg. Hole Size: .051 (1.30)



VERTICAL WIRE ENTRY

5mm SPACING

CAT. NO.	POSITIONS	A DIM.
8738	2	.394 (10.0)
8739	3	.591 (15.0)



Recommended Mtg. Hole Size: .047 (1.19)



SCREWLESS - PUSH BUTTON TYPE

Particularly useful when quick reliable connections are required or when temporary connections are needed, such as on test sets and bread boards. They may be interlocked to achieve the required number of positions.

- Available with two or three terminal positions
- Quick reliable connection
- Mounts easily in predrilled or stamped holes
- Because of accumulating tolerances, we recommend a maximum of 24 positions per row.
- Suited for both solid and stranded wire
- Accepts #20-18 AWG wire*
- Stainless Steel spring assures good contact

SPECIFICATIONS

MATERIAL:

Terminal: Brass, Tin Plate
Contact: Stainless Steel
Housing: Blue Nylon 6/6, UL Rated 94V-0

ELECTRICAL:

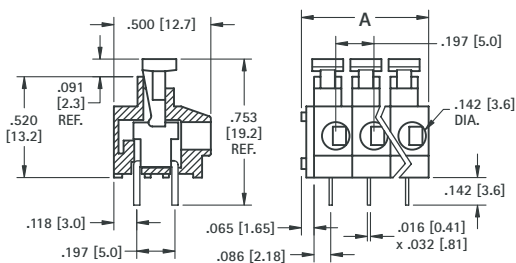
Current Rating: 10 Amps
Dielectric Strength: 2500V
Insulation Breakdown: 1500V AC/min.

MECHANICAL:

Operating Temp: 22°F to 248°F (-30°C to 120°C)
Peak Temp: +392°F (+200°C)

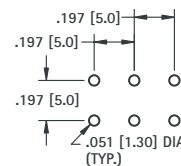
5mm SPACING

CAT. NO.	POSITIONS	A DIM.
8728	2	.459 (11.7)
8729	3	.656 (16.7)



*Recommended wire strip length: .300 (7.6)

Mounting Detail for (3) Positions



8728

HORIZONTAL WIRE ENTRY



8729

MODULAR INTERLOCKING PC TERMINAL BLOCKS