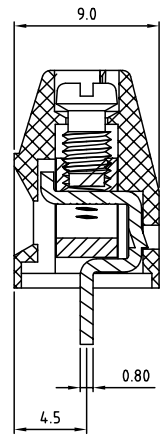
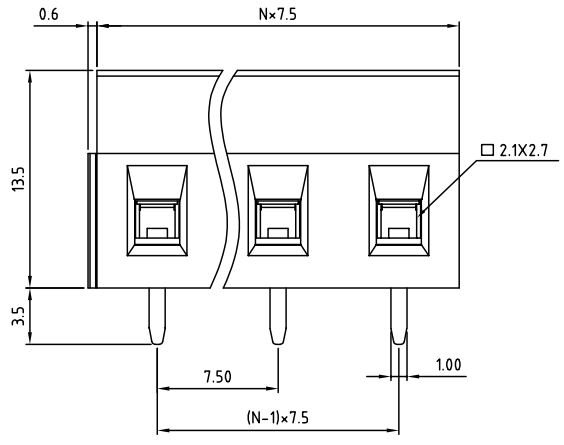
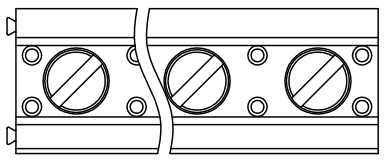


SIGN	DATE	DESCRIPTION	APPROVER
		<i>THIS IS CAD DRAWING, DO NOT REVISE MANUALLY!!!</i>	



- Material**
- Terminal body
  - (metal housing): Brass(CuZn)
  - Terminal screw: Steel Zinc plating "-" slot type
  - Contacts: Brass
  - Surface of solder tail: Tin plated
  - Insulator (housing): Thermoplastic (UL94V-0)

- Electrical** cULus / FIMKO
- Voltage rating: 300VAC / 300VAC
  - Current rating: 16A / 17.5A
  - Wire range: 0.5-1.5mm<sup>2</sup>
  - Solid wire(AWG): 12-28
  - Stranded wire(AWG): 12-28
  - Torque: 3.5Lb-In / 0.4N.m
  - Screw: M3
  - Wire strip length: 6-7mm
  - Withstanding Voltage: 1.6KV / 2.5KV
  - Operating temperature: -30°C to +105°C
  - Soldering temperature: 250°C±10°C/5 Sec
  - Safety Approval: cULus Ⓢ

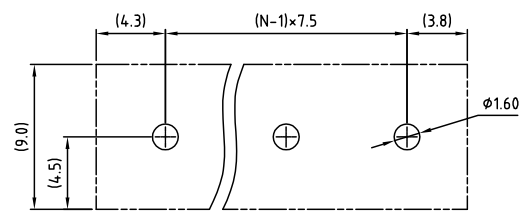
RoHS Compliant

**PART NUMBER:**  
**OSTVIXX4152**

No. of Poles	COLOR:
02: 2 Poles	0: Black
03: 3 Poles	5: Green (Standard)
...	6: Blue
24: 24 Poles	8: Grey

N=Number of poles

P.C.B LAYOUT



THESE DRAWINGS AND SPECIFICATIONS ARE THE PROPERTY OF ON-SHORE TECHNOLOGY, INC. AND SHALL NOT BE REPRODUCED, COPIED OR USED IN ANY MANNER WITHOUT THE PRIOR WRITTEN CONSENT OF ON-SHORE TECHNOLOGY, INC.

<b>ON-SHORE TECHNOLOGY, INC.</b>		TITLE: OSTVI 7.5mm Series 180° wire inlet (without cover)			
		PART NO. OSTVIXX4152	DWG NO. OSTVIXX4152.DWG		
APPROVED	CHECKED	DESIGNED	DRAWN	CUST NO.	Tolerance
Shi Jun 2006.10.20	Marvin 2006.10.20	Marvin 2006.10.20	Marvin 2006.10.20		X. ±0.50
					X.XX ±0.30
					SHEET: 01/01
				REV: E	X* ±1*