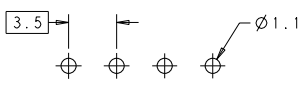
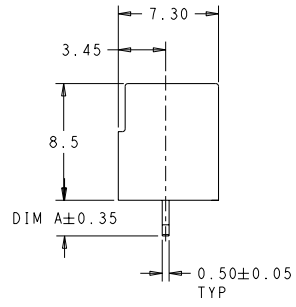
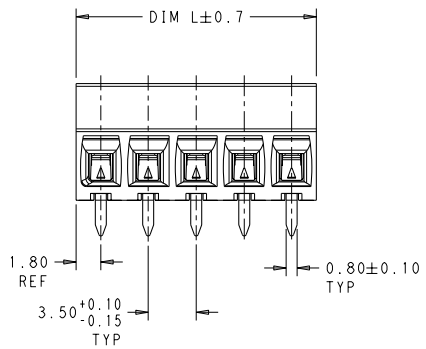
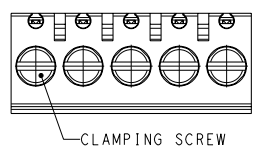


REV	DATE	BY	APPV
P	17MAR2011	AK	HMA
P			

- △ MATERIALS AND FINISH:
 HOUSING: HIGH TEMPERATURE POLYAMIDE, UL 94V-0,
 COLOR: BLACK.
 TERMINAL: COPPER ALLOY, TIN PLATED.
 CLAMP: COPPER ALLOY, NICKEL PLATED.
 CLAMPING SCREW: COPPER ALLOY, NICKEL PLATED.
- WIRE SIZE RANGE: 16-28 AWG.
 - CURRENT RATING: 12A, 150V
 OPERATING TEMPERATURE: -40° TO +110°C
 - SUITABLE FOR 2.4mm MAX PC BOARD THICKNESS.



RECOMMENDED PC BOARD LAYOUT

3.50	14.00	4	2-1776112-4
3.50	10.50	3	2-1776112-3
3.50	7.00	2	2-1776112-2
2.60	14.00	4	1776112-4
2.60	10.50	3	1776112-3
2.60	7.00	2	1776112-2
DIM A	DIM L	NO OF POS	PART NUMBER

THIS DRAWING IS A CONTROLLED DOCUMENT. DWG: S. SCHLEGEL 19JAN2010
 CD: RICHARD 19JAN2010
 APPV: C. RICHARD 19JAN2010

TE TE Connectivity

TERMINAL BLOCK, PCB MOUNT, STRAIGHT, 8.5mm PROFILE, SIDE WIRE ENTRY, 3.5mm PITCH

SIZE: A2 CASE CODE: 00779 DRAWING NO: 1776112

REVISIONS: 1
 WEIGHT: -
 MATERIAL: △
 FINISH: △

CUSTOMER DRAWING SCALE: 5:1 SHEET 1 OF 1 REV P