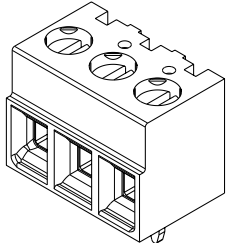
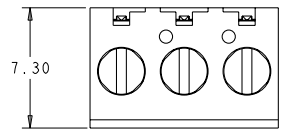
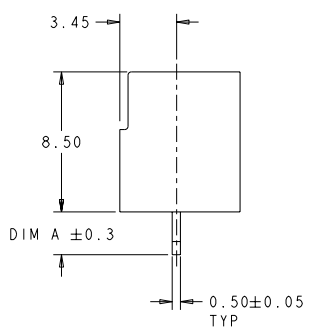
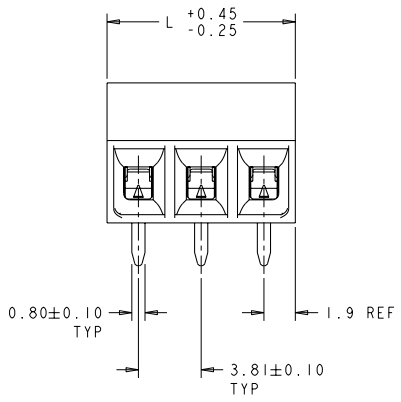


REVOLUTIONS		DATE	BY	APPD
P	LYA			
P	REVISED PER ECO-11-004820	11MAR2011	BR	HMR

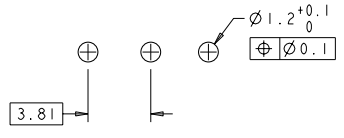


1776113-3 AS SHOWN

- △ MATERIALS AND FINISH:
 HOUSING: HIGH TEMPERATURE POLYAMIDE, UL 94V-0 RATED, COLOR: BLACK.
 TERMINAL: COPPER ALLOY, TIN PLATED.
 CLAMP: COPPER ALLOY, NICKEL PLATED.
 CLAMPING SCREW: COPPER ALLOY, NICKEL PLATED.
- WIRE SIZE RANGE: 16-28 AWG.
 - CURRENT RATING: 12A, 150V
OPERATING TEMPERATURE: -40°C TO +110°C
 - SUITABLE FOR 2.4mm MAX PC BOARD THICKNESS.



3.5	45.72	12	3-1776113-2
	41.91	11	3-1776113-1
	38.10	10	3-1776113-0
	34.29	9	2-1776113-9
	30.48	8	2-1776113-8
	26.67	7	2-1776113-7
2.6	22.86	6	2-1776113-6
	19.05	5	2-1776113-5
	15.24	4	2-1776113-4
	11.43	3	2-1776113-3
	7.62	2	2-1776113-2
	45.72	12	1-1776113-2
DIM A	41.91	11	1-1776113-1
	38.10	10	1-1776113-0
	34.29	9	1-1776113-9
	30.48	8	1-1776113-8
	26.67	7	1-1776113-7
	22.86	6	1-1776113-6
	19.05	5	1-1776113-5
	15.24	4	1-1776113-4
	11.43	3	1-1776113-3
	7.62	2	1-1776113-2
	L	NO OF POSN	PART NUMBER



RECOMMENDED PC BOARD LAYOUT

THIS DRAWING IS A CONTROLLED DOCUMENT. DWG: 02JUN2005, S. WELDON, CDR. C. RICHARD, 02JUN2005, APPRO. C. RICHARD, 02JUN2005.

TE TE Connectivity

NAME: TERMINAL BLOCK, PCB MOUNT, STRAIGHT, 8.5mm PROFILE, SIDE WIRE ENTRY, 3.81mm PITCH

DATE: 02JUN2005, SHEET: A200779, CASE CODE: 1776113, DRAWING NO: 1776113

MATERIAL: - FINISH: - WEIGHT: - CUSTOMER DRAWING

SCALE: 6:1, SHEET: 1 OF 1, REV: P