

4

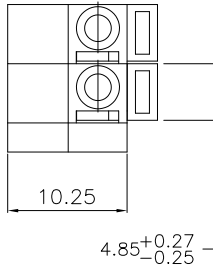
3

2

1

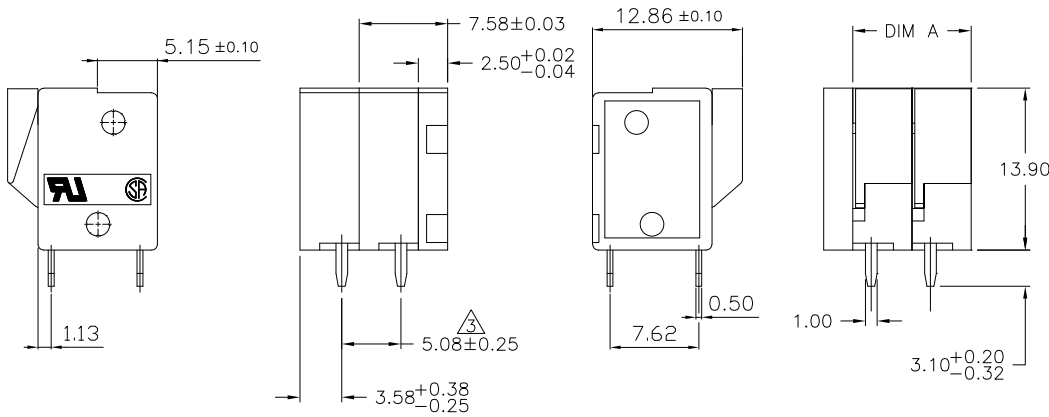
THIS DRAWING IS UNPUBLISHED. RELEASED FOR PUBLICATION
 © COPYRIGHT - By - ALL RIGHTS RESERVED.

| LOC | | DIST | | REVISIONS | | | |
|-----|-----|---------------------------|---------|-----------|------|--|--|
| P | LTR | DESCRIPTION | DATE | DWN | APVD | | |
| FT | 0 | | | | | | |
| P | | REVISED PER ECO-11-004820 | 11MAR11 | RK | HMR | | |



1. ALL DIMENSIONS ARE IN mm'S.
2. BUCHANAN LOGO TO APPEAR ON HOUSING, LOCATION OPTIONAL WHERE SPACE PERMITS.

NON CUMULATIVE



1776260-2 AS SHOWN

| | | |
|--------|-------------|-------------|
| 60.96 | 12 | 1-1776260-2 |
| 55.88 | 11 | 1-1776260-1 |
| 50.80 | 10 | 1-1776260-0 |
| 45.72 | 9 | 1776260-9 |
| 40.64 | 8 | 1776260-8 |
| 35.56 | 7 | 1776260-7 |
| 30.48 | 6 | 1776260-6 |
| 25.40 | 5 | 1776260-5 |
| 20.32 | 4 | 1776260-4 |
| 15.24 | 3 | 1776260-3 |
| 10.16 | 2 | 1776260-2 |
| DIM. A | NO. OF POS. | PART NUMBER |

THIS DRAWING IS A CONTROLLED DOCUMENT.

| | | | | | |
|----------------|--|-----------------------|--|-----------|--------------|
| DIMENSIONS: mm | TOLERANCES UNLESS OTHERWISE SPECIFIED: | DWN S SCHLEGEL 5/6/05 | TE Connectivity | | |
| | 0 PLC ± - | CHK C RICHARD 5/6/05 | | | |
| MATERIAL | FINISH | APVD C RICHARD 5/6/05 | NAME | | |
| | | PRODUCT SPEC | TERMINAL BLOCK, BOARD MT. SCREWLESS TOP WIRE ENTRY, HIGH TEMP | | |
| | | APPLICATION SPEC | SIZE | CAGE CODE | DRAWING NO |
| | | WEIGHT | A3 | 00779 | C-1776260 |
| | | CUSTOMER DRAWING | SCALE | NTS | SHEET 1 of 2 |
| | | | | | REV P |

4

3

2

1

THIS DRAWING IS UNPUBLISHED. RELEASED FOR PUBLICATION
 © COPYRIGHT - By - ALL RIGHTS RESERVED.

| LOC | DIST | REVISIONS | | | | |
|-----|------|-------------|------|-----|------|--|
| P | LTR | DESCRIPTION | DATE | DWN | APVD | |
| FT | 0 | SEE SHEET 1 | - | - | - | |

1. Application and Features:

- 1-1. This screwless terminals are suitable for both solid and flexible conductors.
- 1-2. A spring made of stainless strip steel guarantees for permanent and safe contact.
- 1-3. The type is operated by pushing a screwdriver on the level. This lever is fully integrated into the body.
- 1-4. It is equipped with a cover for easy hand adjustment.

2. Technical Data:

2-1. Material:


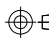
- 2-1-1. HOUSING: NYLON 6.6, UL94V-0, GREEN,
- 2-1-2. Contact: Brass(Cu Zn)
Ni,Tin plated.
first 50u" (min) Ni plated over all.
last 120u" (min) Tin plated over all.
- 2-1-3. Metal Plate: Stainless strip steel.

2-2. Electrical:

- 2-2-1. Current rating: 10 Amp 300VAC.
- 2-2-2. Dielectric withstanding voltage: 2000VAC (min).
- 2-2-3. Insulation resistance: 500M Ω more at 500VAC.
- 2-2-4. Wire Range: 14-22AWG.

2-3. Mechanical:

- 2-3-1. Wire retention force: 1.2 Kg (min).
- 2-3-2. Operating temperature: -55°C to +105°C.
- 2-3-3. Solderability: 95% coverage (min).

| | | | | | |
|---|--|--------------|--|-----------|--|
| THIS DRAWING IS A CONTROLLED DOCUMENT. | | DWN | S SCHLEGEL | 5/6/05 |  TE Connectivity |
| DIMENSIONS: | | CHK | C RICHARD | 5/6/05 | |
| mm | TOLERANCES UNLESS OTHERWISE SPECIFIED: | APVD | C RICHARD | 5/6/05 | |
|  | 0 PLC ± - 1 PLC ± 0.3 2 PLC ± 0.25 3 PLC ± - 4 PLC ± - ANGLES ± - | NAME | TERMINAL BLOCK, BOARD MT. SCREWLESS TOP WIRE ENTRY, HIGH TEMP | | |
| MATERIAL | FINISH | PRODUCT SPEC | APPLICATION SPEC | | RESTRICTED TO |
| - | - | SIZE | A3 | CAGE CODE | 00779 |
| CUSTOMER DRAWING | | DRAWING NO | C=1776260 | | SCALE |
| | | WEIGHT | - | | NTS |
| | | SCALE | NTS | | SHEET |
| | | | | 2 | of 2 |
| | | | | REV | P |